

Estimating nuclear matter parameters from compact star observables: a traditional method vs. the burte force

G.G. Barnaföldi, in collaboration with
D. Alvarez-Castillo, A. Ayrian, H. Grigorian, A. Jakovác, P. Pósfay, B. Szigeti

Support: *Hungarian OTKA grants, NK123815, K135515 Wigner GPU Laboratory,
the PHAROS MP16214 and THOR CA15213 COST actions.*

ELTE TTK ElmFiz Seminar, Budapest, 16th March 2021



Outline

1) Traditional way: mean field model

- In CORE approximation:
using maximal mass compact stars
→ we determine the nuclear parameters & uncertainties

2) Brute force: Bayesian model

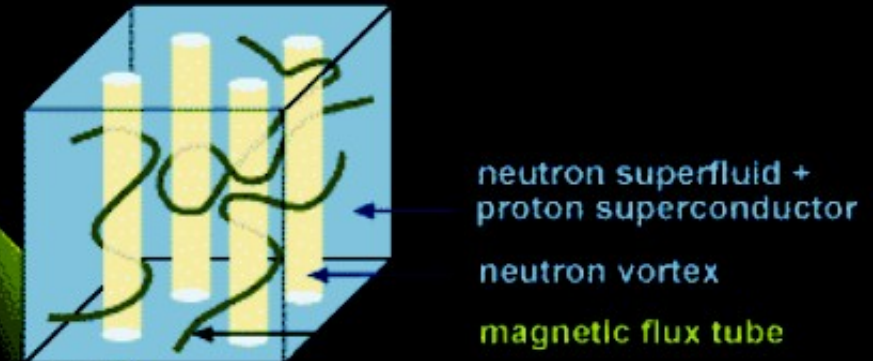
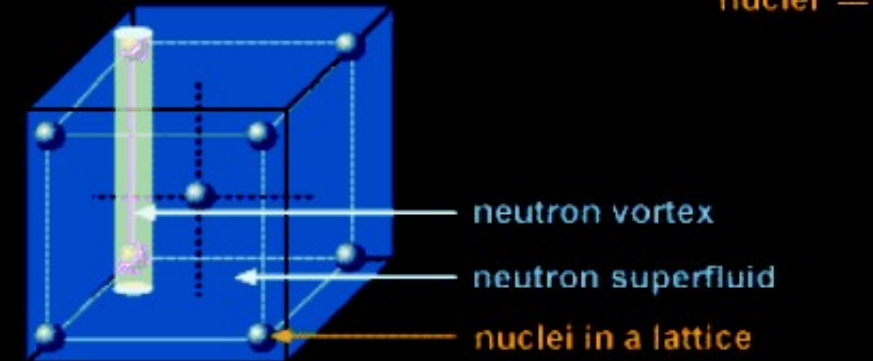
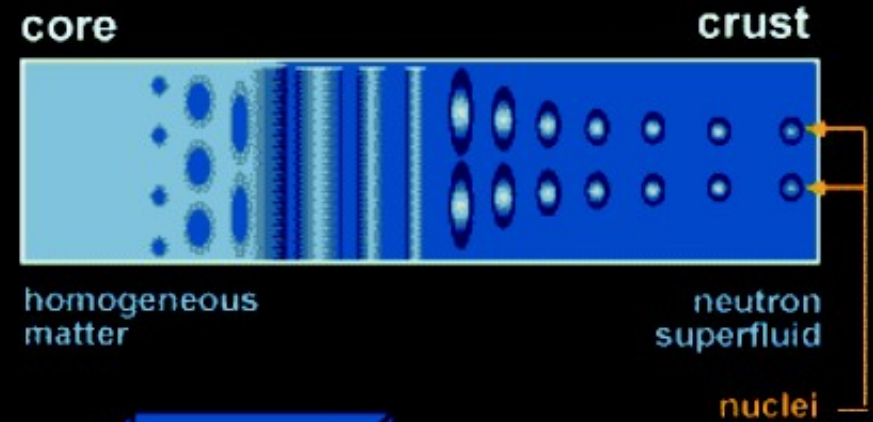
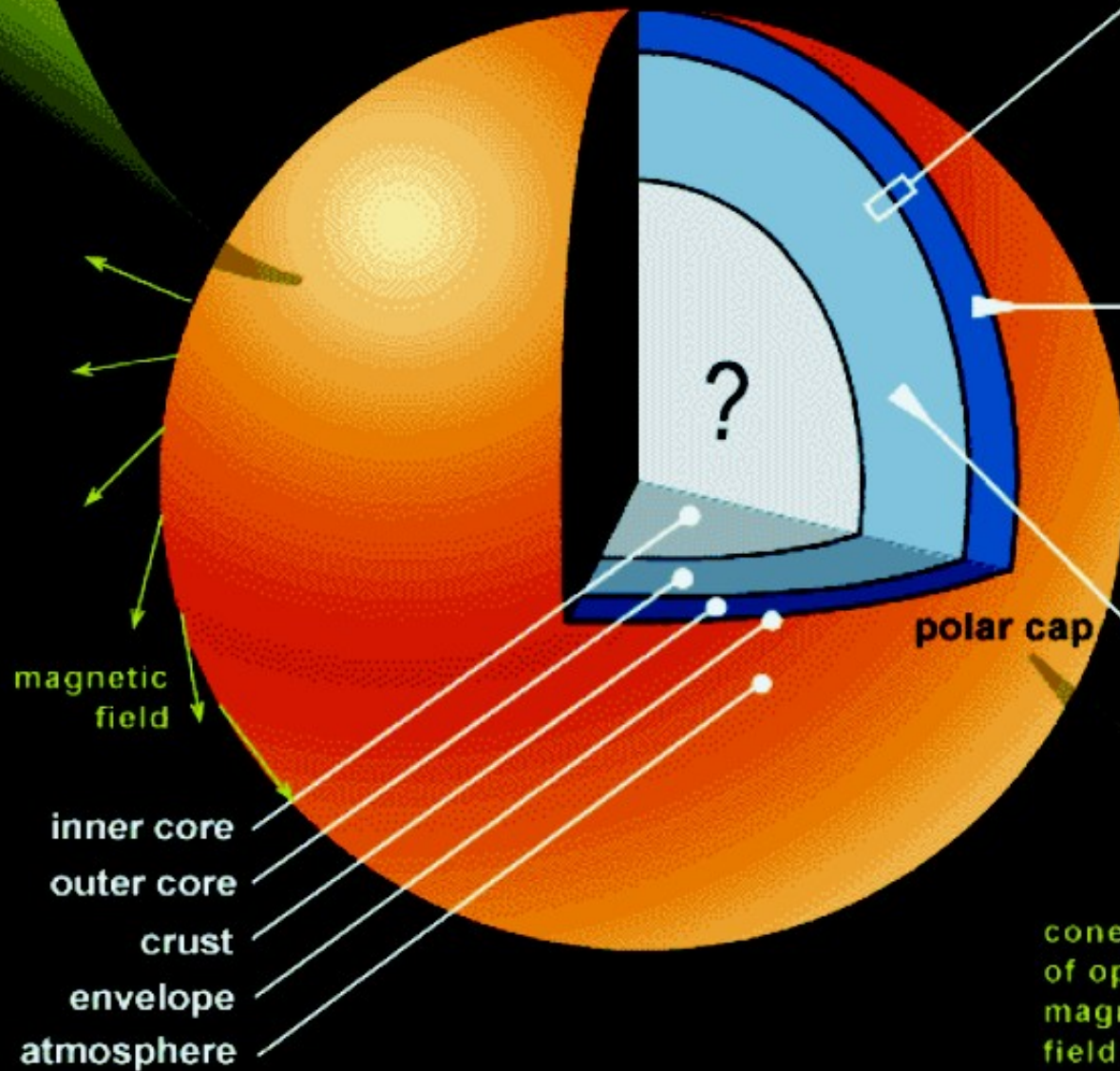
- Maximal mass compact stars + more constraints from GW data, and M-R observations
→ more precise determination

3) Conclusions:

- Comparison of the traditional & Bayesian results

a neutron star

surface and interior



cone of open magnetic field lines

Description of the compact star interior

Dimensions:

$R \sim 10 - 15 \text{ km}$

$M \sim 1.2 - 2.2 M_{\odot}$

Outer crust:

Ions, electron gas,
neutrons

Inner core:

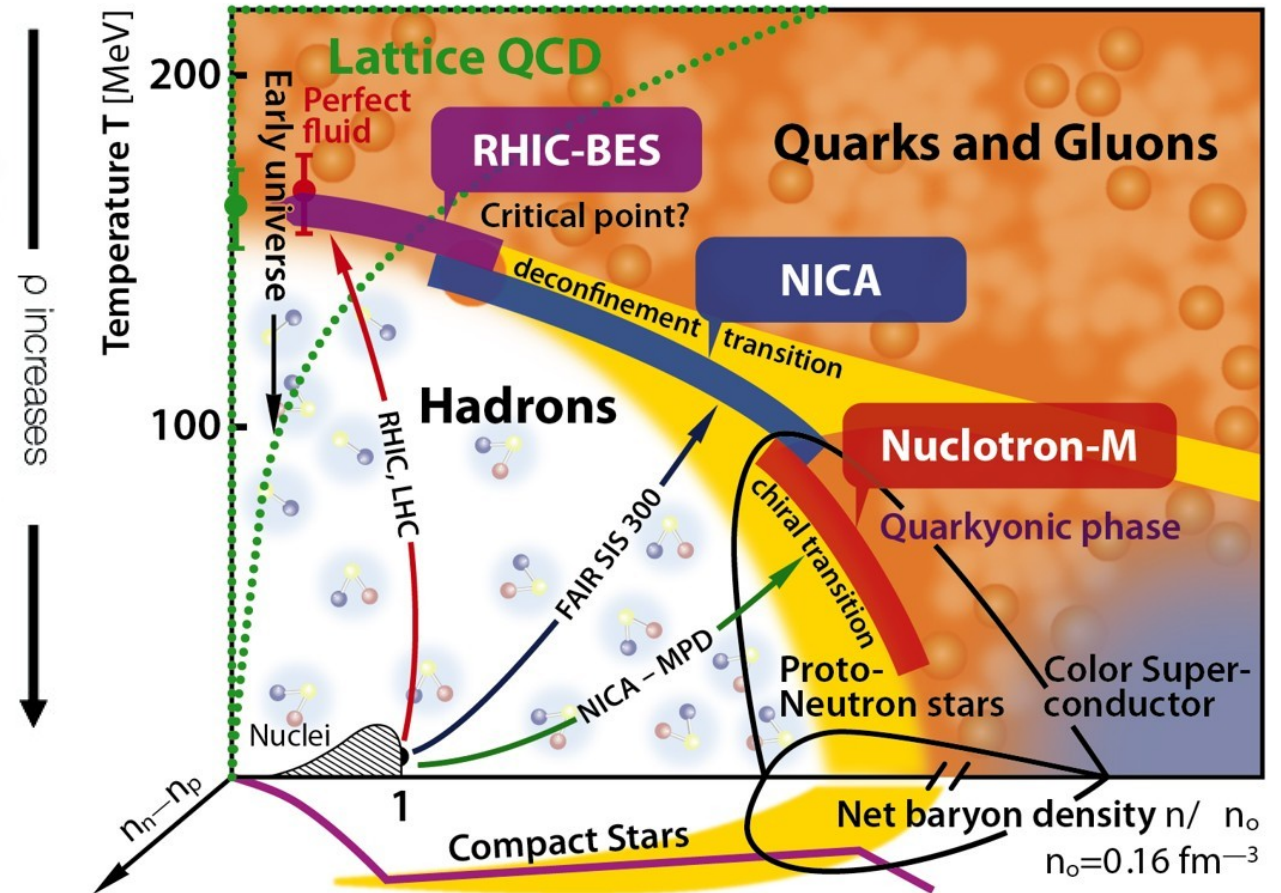
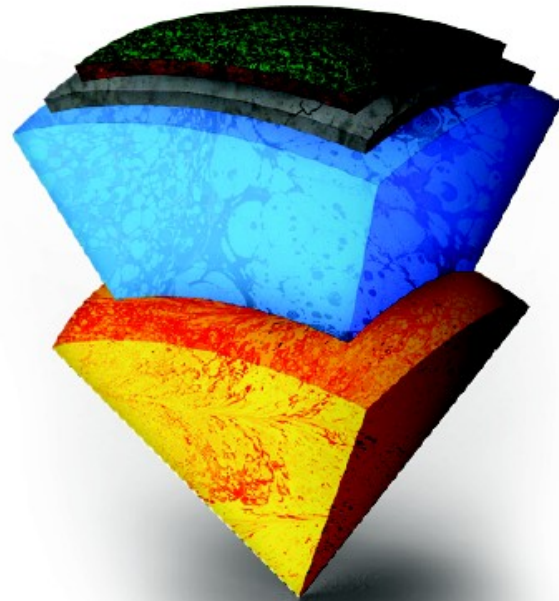
Neutrons?

Protons?

Hyperons?

Kaon condensate?

Quark matter?



Description of the compact star interior

Dimensions:

$R \sim 10 - 15 \text{ km}$

$M \sim 1.2 - 2.2 M_{\odot}$

Outer crust:

Ions, electron gas,
neutrons

Inner core:

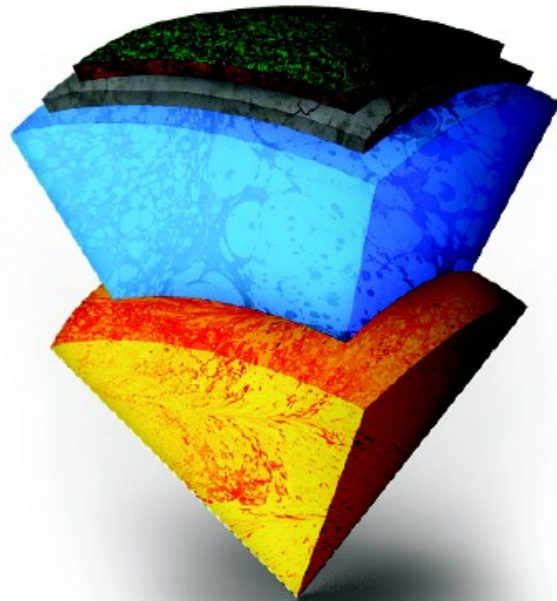
Neutrons?

Protons?

Hyperons?

Kaon condensate?

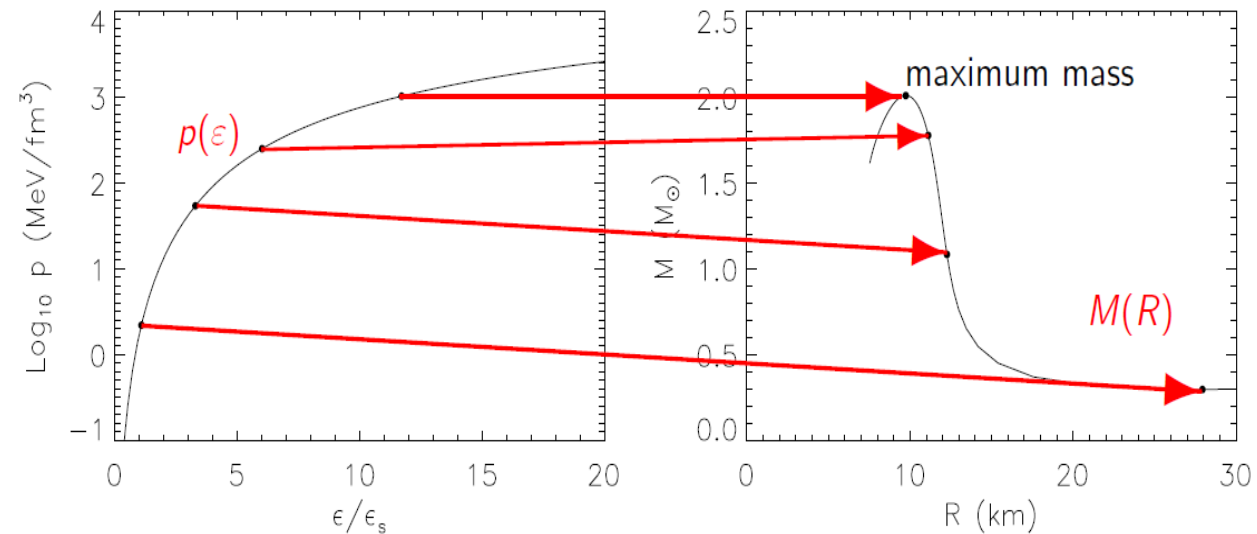
Quark matter?



p increases

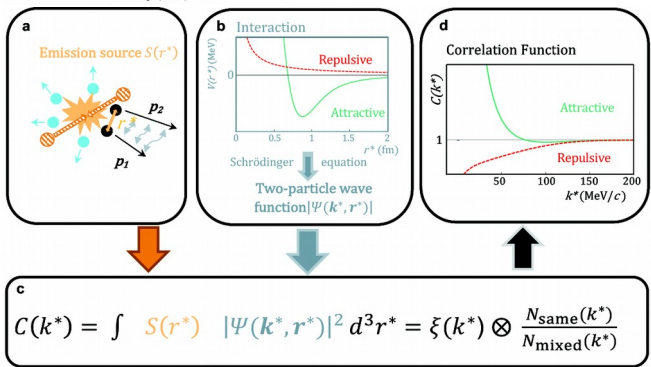
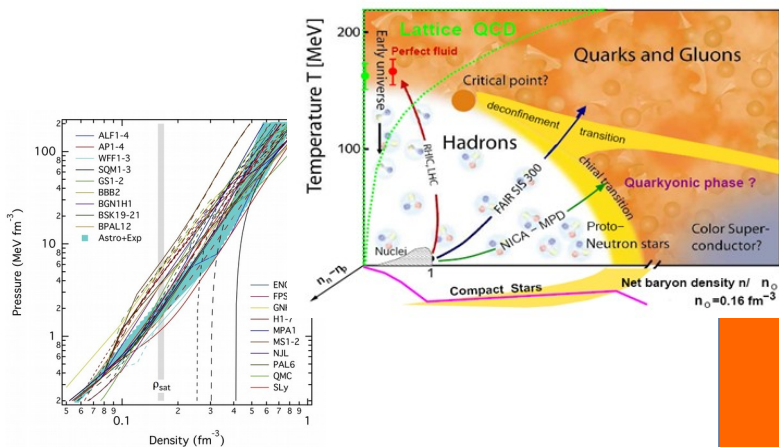
$$\frac{dp}{dr} = -\frac{G(m + 4\pi pr^3)(\epsilon + p)}{c^2 r(r - 2Gm/c^2)}$$

$$\frac{dm}{dr} = 4\pi \frac{\epsilon}{c^2} r^2$$

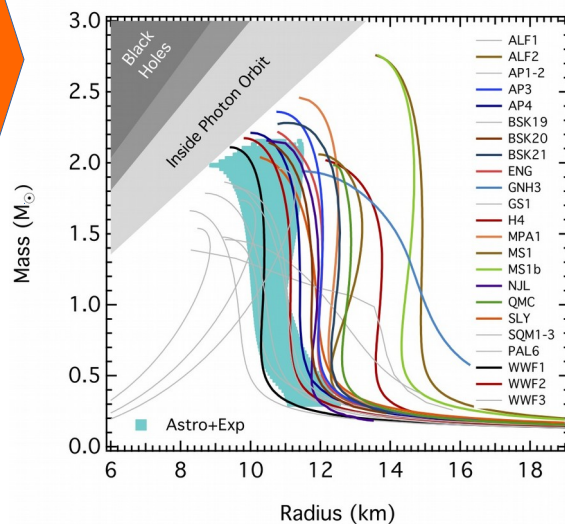
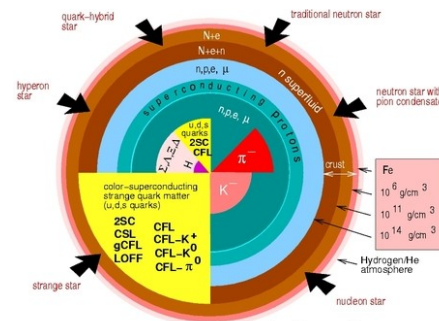


Recent inputs & the program

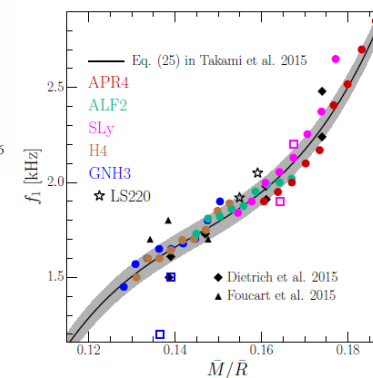
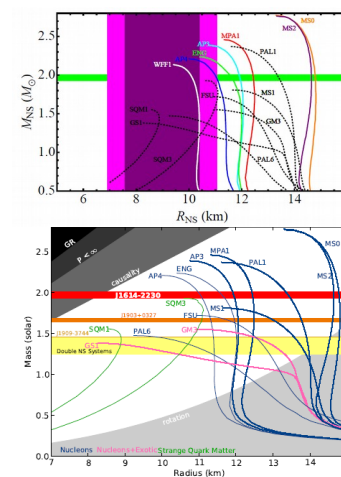
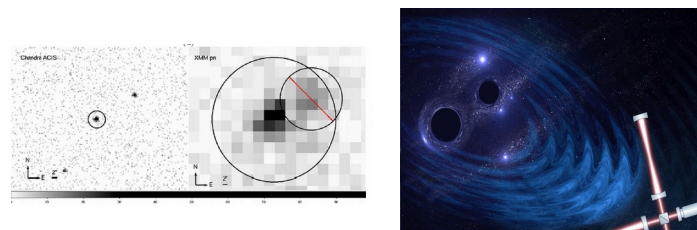
EoS experiment & theory



Application in compact stars

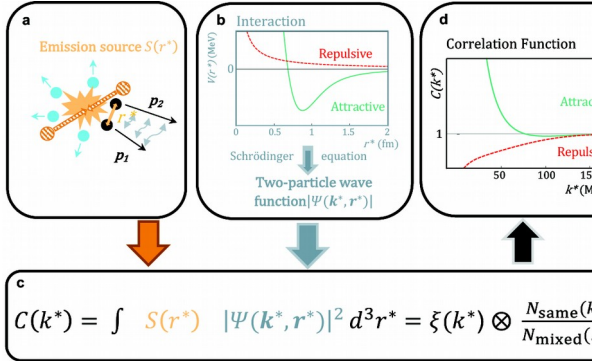
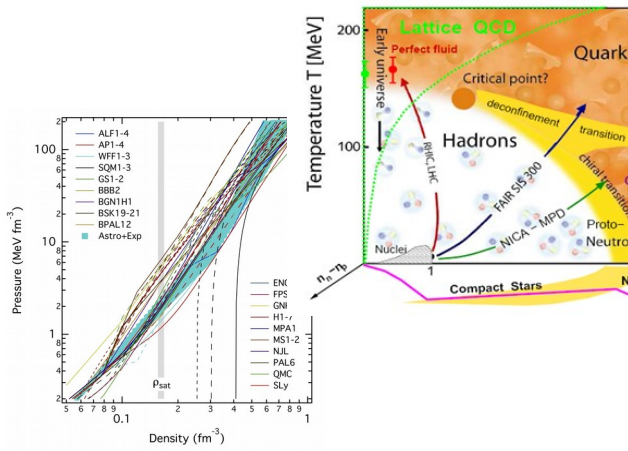


Constraints by astrophysical observations

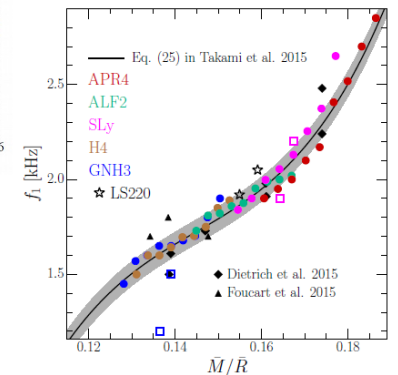
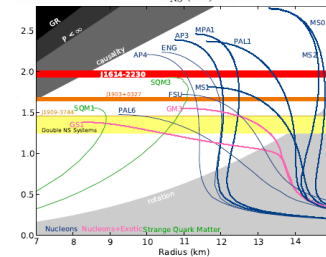
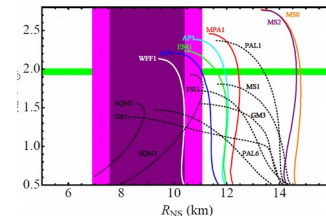
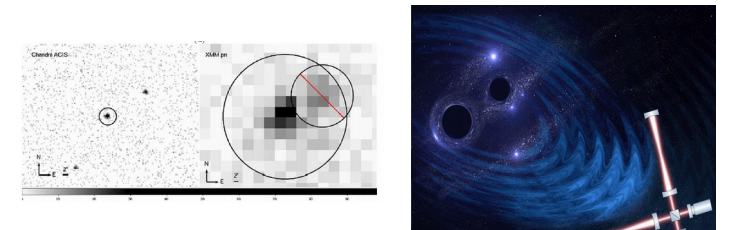


Face the masquerade problem!

EoS
experiment & the

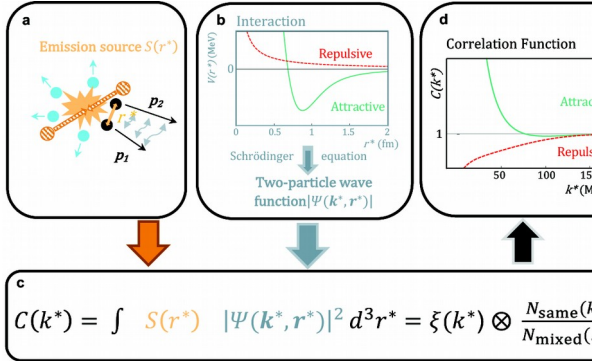
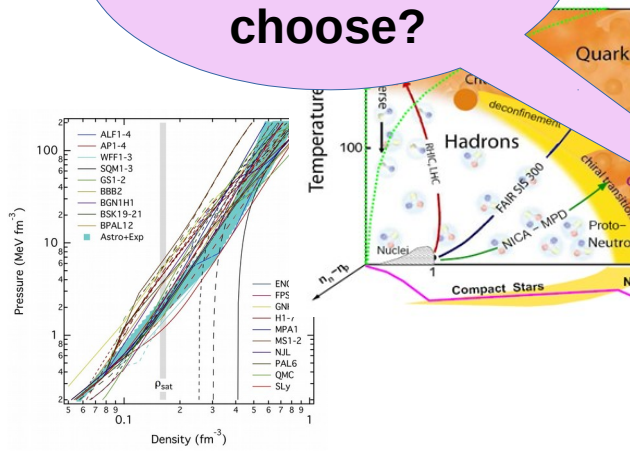


Constraints by
astrophysical observations

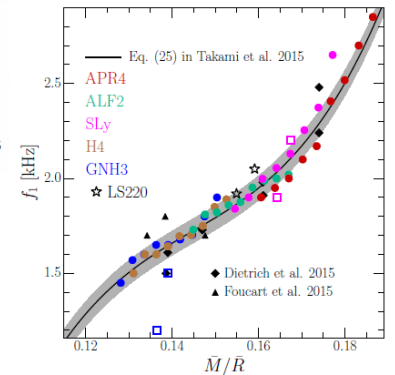
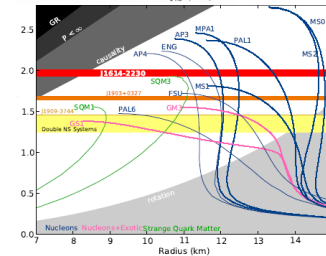
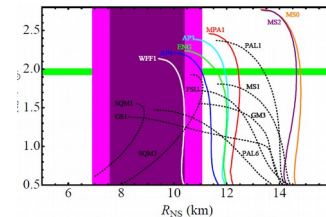
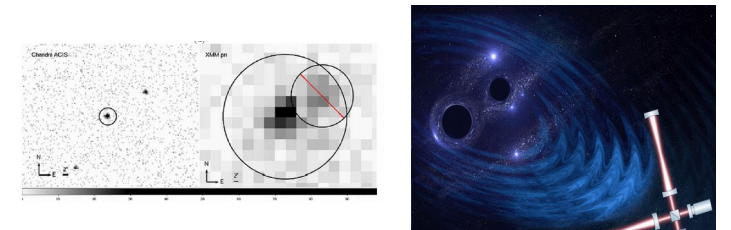


Face the masquerade problem!

Uuups,
which EoS
I should
choose?



Constraints by
astrophysical observations



(De)motivation...

Weih & Most & Rezzolla: ApJ 881,73 (2019)

Optimal neutron-star mass ranges to constrain the equation of state of nuclear matter with electromagnetic and gravitational-wave observations

L. R. WEIH,¹ E. R. MOST,¹ AND L. REZZOLLA¹

¹*Institut für Theoretische Physik, Goethe Universität Frankfurt am Main, Germany*

ABSTRACT

Exploiting a very large library of physically plausible equations of state (EOSs) containing more than 10^7 members and yielding more than 10^9 stellar models, we conduct a survey of the impact that a neutron-star radius measurement via electromagnetic observations can have on the EOS of nuclear matter. Such measurements are soon to be expected from the ongoing NICER mission and will complement the constraints on the EOS from gravitational-wave detections. Thanks to the large statistical range of our EOS library, we can obtain a first quantitative estimate of the commonly made assumption that the high-density part of the EOS is best constrained when measuring the radius of the most massive, albeit rare, neutron stars with masses $M \gtrsim 2.1 M_\odot$. At the same time, we find that radius measurements of neutron stars with masses $M \simeq 1.7 - 1.85 M_\odot$ can provide the strongest constraints on the low-density part of the EOS. Finally, we quantify how radius measurements by future missions can further improve our understanding of the EOS of matter at nuclear densities.

The sad reality is...

Weih & Most & Rezzolla: ApJ 881,73 (2020)

Optimal neutron-star mass ranges to

matter with electromagnetic and

Exploiting
than 10^7
that a new
nuclear matter
will complement
statistical range
assumption that
the most massive
that radius measure-
constraints on the
future missions can

many

containing more
of the impact
on the EOS of
mission and
to the large
only made
the radius of
the same time, we find
 $1.5 M_{\odot}$ can provide the strongest
quantify how radius measurements by
of the EOS of matter at nuclear densities.



The sad reality is...

Weih & Most & Rezzolla: ApJ 881,73 (2020)

Optimal neutron-star mass ranges to

matter with electromagnetic and

NO MASK
MASQUARADE



Exploiting
than 10^7
that a new
nuclear matter
will complement
statistical range
assumption that
the most massive
that radius measurements
constraints on the
future missions can

many

containing more

of the impact
on the EOS of
mission and
to the large
only made
the radius of
the same time, we find
 $2.5 M_{\odot}$ can provide the strongest
quantify how radius measurements by
of the EOS of matter at nuclear densities.

NO ENTRY

Let's explore the uncertainties...

...in a traditional way

P. Pósfay, GGB, A. Jakovác: 2004.08230 (submitted to PASA), + B. Szigeti EPJ ST 229 (2020) 3605

Investigate this with extended σ - ω model in mean field

$$\mathcal{L}_{MF} = \sum_{i=1,2} \bar{\psi}_i \left(i\cancel{\partial} - \underbrace{m_N + g_\sigma \bar{\sigma}}_{\text{Nucleon effective mass}} - g_\omega \gamma^0 \bar{\omega}_0 \right) \psi_i$$

Proton and neutron

$$-\frac{1}{2} m_\sigma^2 \bar{\sigma}^2 - \lambda_3 \bar{\sigma}^3 - \lambda_4 \bar{\sigma}^4$$

Scalar meson self interaction terms

$$+\frac{1}{2} m_\omega^2 \bar{\omega}_0^2$$

Extra terms

Vector meson

$$+\frac{1}{2} m_\rho^2 \rho_\mu^a \rho^{\mu a}$$

Tensor meson

$$+\bar{\Psi}_e (i\cancel{\partial} - m_e) \Psi_e$$

Electron in β -equilibrium

$$\mu_n = \mu_p + \mu_e$$

Investigate this with extended σ - ω model in mean field

$$\mathcal{L}_{MF} = \sum_{i=1,2} \bar{\psi}_i \left(i\cancel{\partial} - \underbrace{m_N + g_\sigma \bar{\sigma}}_{\text{Nucleon effective mass}} - g_\omega \gamma^0 \bar{\omega}_0 \right) \psi_i$$

Proton and neutron

$$-\frac{1}{2} m_\sigma^2 \bar{\sigma}^2 - \lambda_3 \bar{\sigma}^3 - \lambda_4 \bar{\sigma}^4$$

Scalar meson self interaction terms

$$+\frac{1}{2} m_\omega^2 \bar{\omega}_0^2$$

Extra terms

p - n Nuclear force

Vector meson

$$+\frac{1}{2} m_\rho^2 \rho_\mu^a \rho^{\mu a}$$

Tensor meson

$$+\bar{\Psi}_e (i\cancel{\partial} - m_e) \Psi_e$$

Electron in β -equilibrium

$$\mu_n = \mu_p + \mu_e$$

Investigate this with extended σ - ω model in mean field

$$\mathcal{L}_{MF} = \sum_{i=1,2} \bar{\psi}_i \left(i\cancel{\partial} - \underbrace{m_N + g_\sigma \bar{\sigma}}_{\text{Nucleon effective mass}} - g_\omega \gamma^0 \bar{\omega}_0 \right) \psi_i$$

Proton and neutron

$$-\frac{1}{2} m_\sigma^2 \bar{\sigma}^2 - \lambda_3 \bar{\sigma}^3 - \lambda_4 \bar{\sigma}^4$$

Scalar meson self interaction terms

$$+\frac{1}{2} m_\omega^2 \bar{\omega}_0^2$$

Vector meson

$$+\frac{1}{2} m_\rho^2 \rho_\mu^a \rho^{\mu a}$$

Tensor meson

Isospin asymmetry

$$+\bar{\Psi}_e (i\cancel{\partial} - m_e) \Psi_e$$

Electron in β -equilibrium

$$\mu_n = \mu_p + \mu_e$$

Investigate this with extended σ - ω model in mean field

$$\mathcal{L}_{MF} = \sum_{i=1,2} \bar{\psi}_i \left(i\cancel{\partial} - \underbrace{m_N + g_\sigma \bar{\sigma}}_{\text{Nucleon effective mass}} - g_\omega \gamma^0 \bar{\omega}_0 \right) \psi_i$$

Proton and neutron

$$-\frac{1}{2} m_\sigma^2 \bar{\sigma}^2 - \lambda_3 \bar{\sigma}^3 - \lambda_4 \bar{\sigma}^4$$

Scalar meson self interaction terms

$$+\frac{1}{2} m_\omega^2 \bar{\omega}_0^2$$

Vector meson

$$+\frac{1}{2} m_\rho^2 \rho_\mu^a \rho^{\mu a}$$

Tensor meson

$$+ \bar{\Psi}_e (i\cancel{\partial} - m_e) \Psi_e$$

Electron in β -equilibrium

$$\mu_n = \mu_p + \mu_e$$

Investigate this with extended σ - ω model in mean field

$$\mathcal{L}_{MF} = \sum_{i=1,2} \bar{\psi}_i \left(i\cancel{\partial} - \underbrace{m_N + g_\sigma \bar{\sigma}}_{\text{Nucleon effective mass}} - g_\omega \gamma^0 \bar{\omega}_0 \right) \psi_i$$

Proton and neutron

$$-\frac{1}{2} m_\sigma^2 \bar{\sigma}^2 - \lambda_3 \bar{\sigma}^3 - \lambda_4 \bar{\sigma}^4$$

Scalar meson self interaction terms

$$+\frac{1}{2} m_\omega^2 \bar{\omega}_0^2$$

Extra terms

Vector meson

$$+\frac{1}{2} m_\rho^2 \rho_\mu^a \rho^{\mu a}$$

Tensor meson

$$+\bar{\Psi}_e (i\cancel{\partial} - m_e) \Psi_e$$

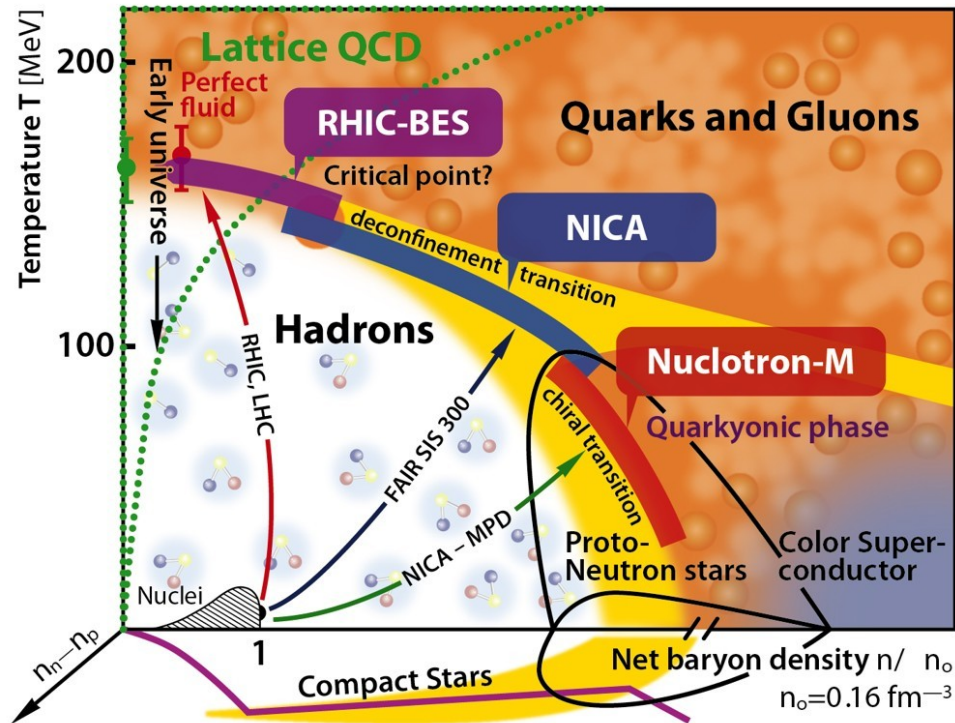
Electron in β -equilibrium

$$\mu_n = \mu_p + \mu_e$$

Modified σ - ω model in mean field

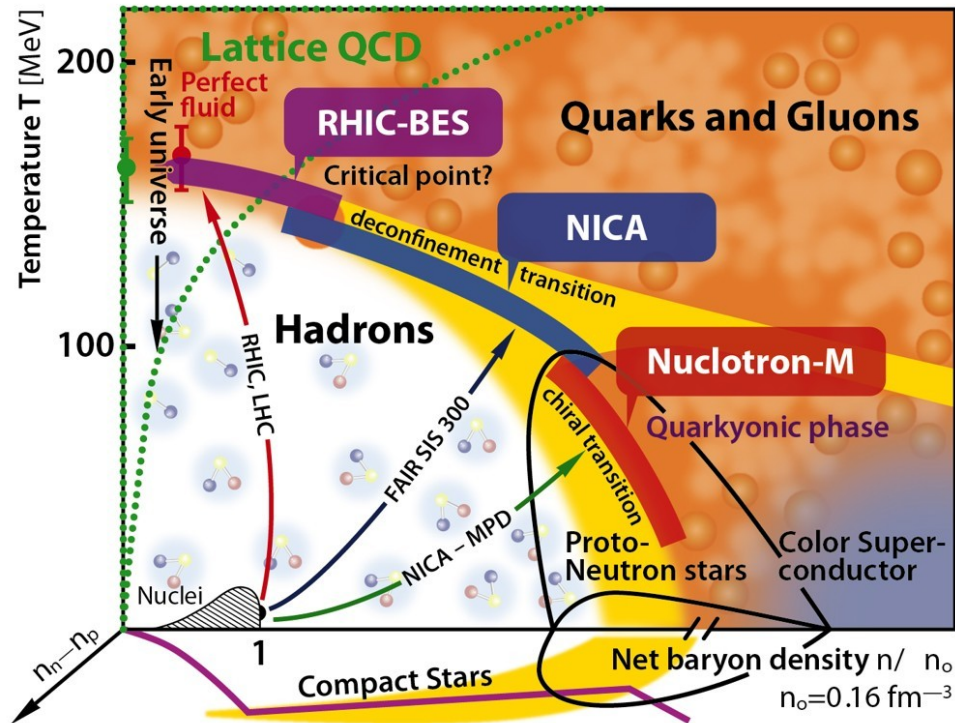
- **Theoretical mean field model:**
 - Symmetric case: 3 combinations with the higher-order scalar meson self-interaction terms to original Walecka:
 - Asymmetric case: tensor force is added to the interaction in addition to the electrons, for β -equilibrium.
- **Parameters of the theoretical model**
 - Fit couplings/masses/etc. according to the Rhoades–Ruffini theorem in agreement with experimental data.
 - Parameters are usually non-independent: optimization of the parameters need to perform \rightarrow similar EoS
- **Cross check the consistency with the the existing EM, GR, HIC, etc data + errors \rightarrow Theoretical uncertainties**

Parameters to fit normal nuclear matter



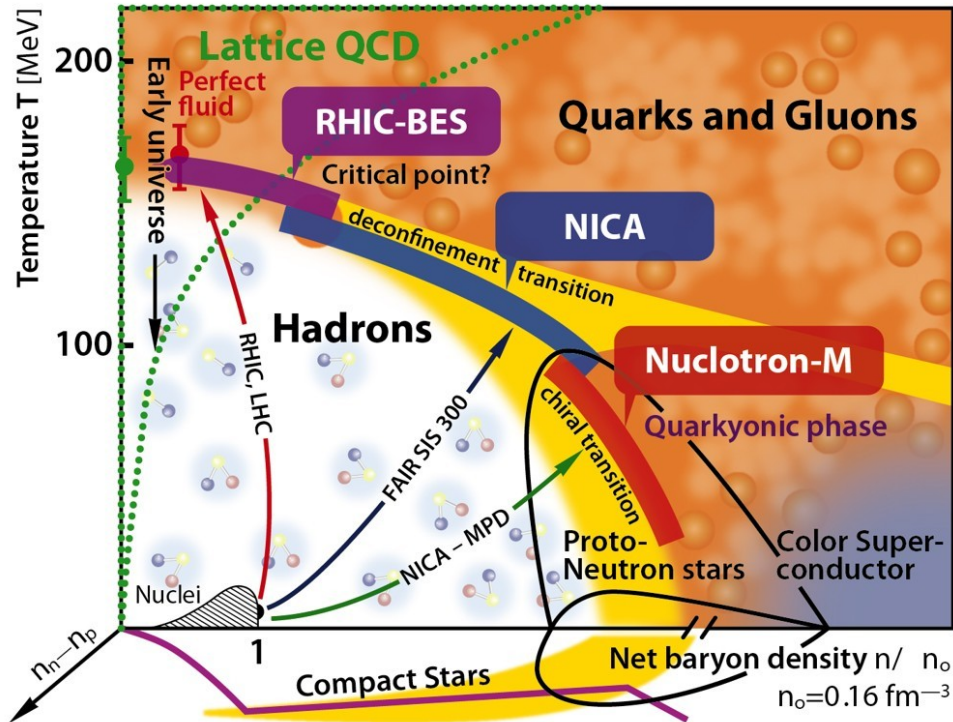
Model	n_s [fm^{-3}]	B [MeV]	K [MeV]	S_0 [MeV]	m^* [m_N]
NL ρ	0.1459	-16.062	203.3	30.8	0.603
NL $\rho\delta$	0.1459	-16.062	203.3	31.0	0.603
DBHF	0.1810	-16.150	230.0	34.4	0.678
DD	0.1487	-16.021	240.0	32.0	0.565
D3C	0.1510	-15.981	232.5	31.9	0.541
KVR	0.1600	-15.800	250.0	28.8	0.805
KVOR	0.1600	-16.000	275.0	32.9	0.800
DD-F	0.1469	-16.024	223.1	31.6	0.556

Parameters to fit normal nuclear matter



Parameter	Value
Saturation density	0.156 1/fm^3
Binding energy	-16.3 MeV
Nucleon effective mass	$0.6 m_N$
Nucleon Landau mass	$0.83 m_N$
incompressibility	240 MeV
Asymmetry energy	32.5 MeV

Parameters to fit normal nuclear matter



Parameter	Value
Saturation density	0.156 $1/\text{fm}^3$
Binding energy	-16.3 MeV
Nucleon effective mass	0.6 m_N
Nucleon Landau mass	0.83 m_N
incompressibility	240 MeV
Asymmetry energy	32.5 MeV

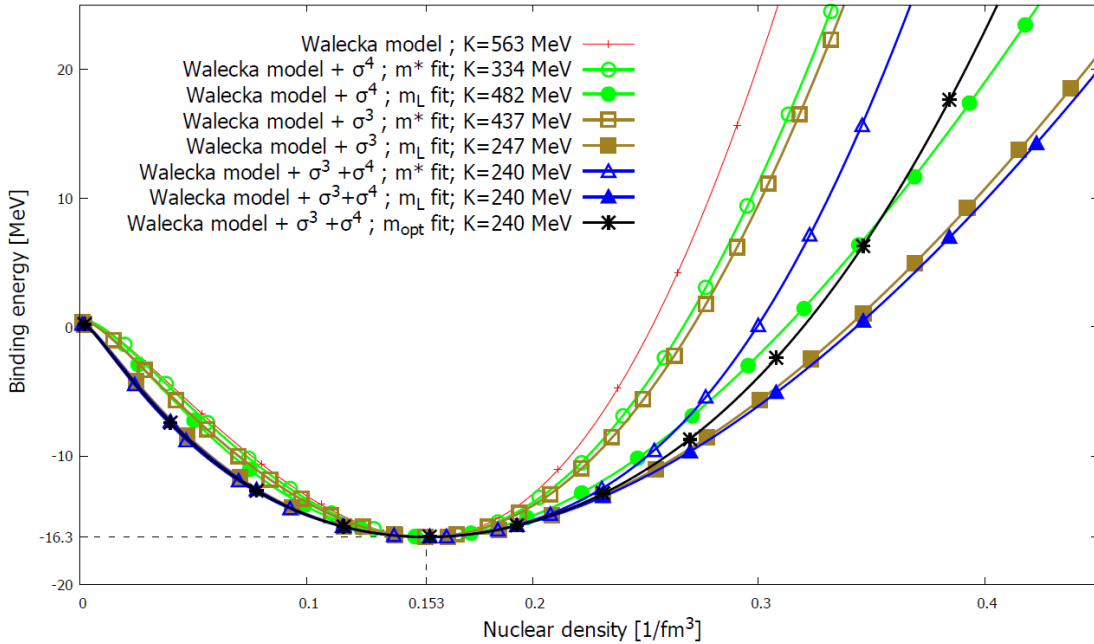
Incompressibility

$$K = k_F^2 \frac{\partial^2(\epsilon/n)}{\partial k_F^2} = 9 \frac{\partial p}{\partial n}$$

Landau mass

$$m_L = \frac{k_F}{v_F} = \sqrt{k_F^2 + m_{N,eff}^2}$$

Parameters to fit normal nuclear matter



Parameter	Value
Saturation density	0.156 1/fm ³
Binding energy	-16.3 MeV
Nucleon effective mass	0.6 m _N
Nucleon Landau mass	0.83 m _N
incompressibility	240 MeV
Asymmetry energy	32.5 MeV



The effective mass and Landau mass
are NOT independent!
The can not be fitted simultaneously



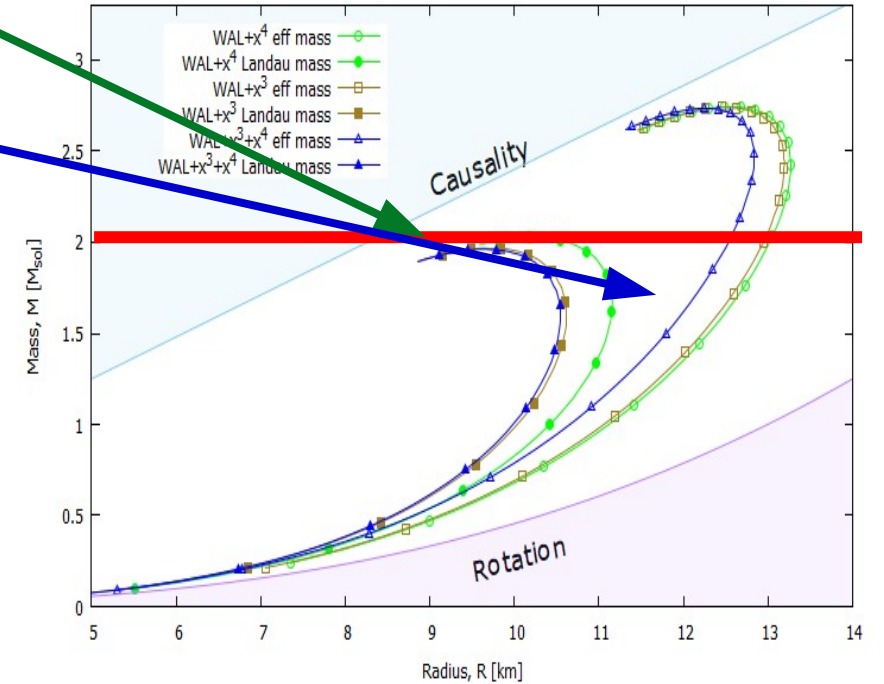
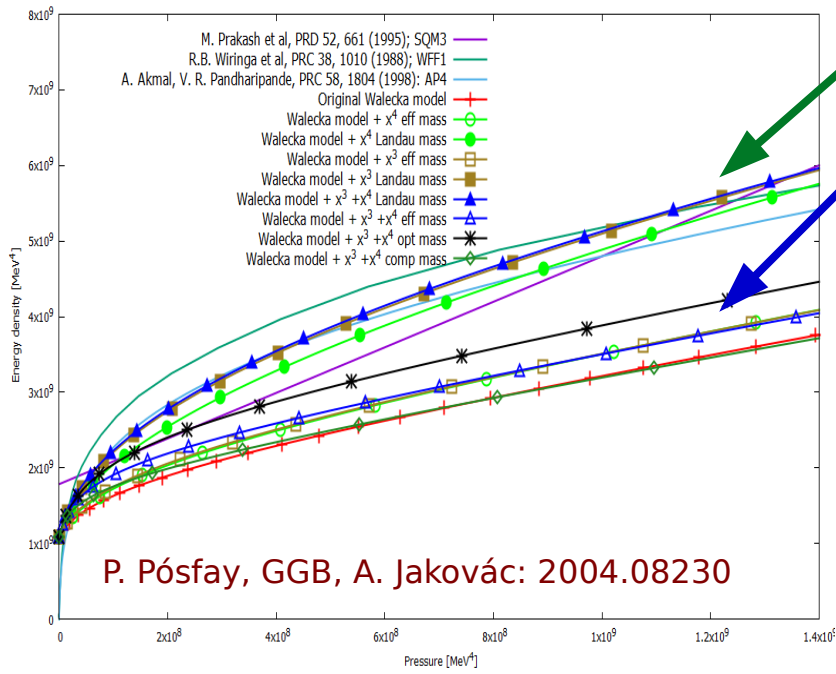
Incompressibility

$$K = k_F^2 \frac{\partial^2(\epsilon/n)}{\partial k_F^2} = 9 \frac{\partial p}{\partial n}$$

Landau mass

$$m_L = \frac{k_F}{v_F} = \sqrt{k_F^2 + m_{N,eff}^2}$$

The EoS & M-R of different model fits

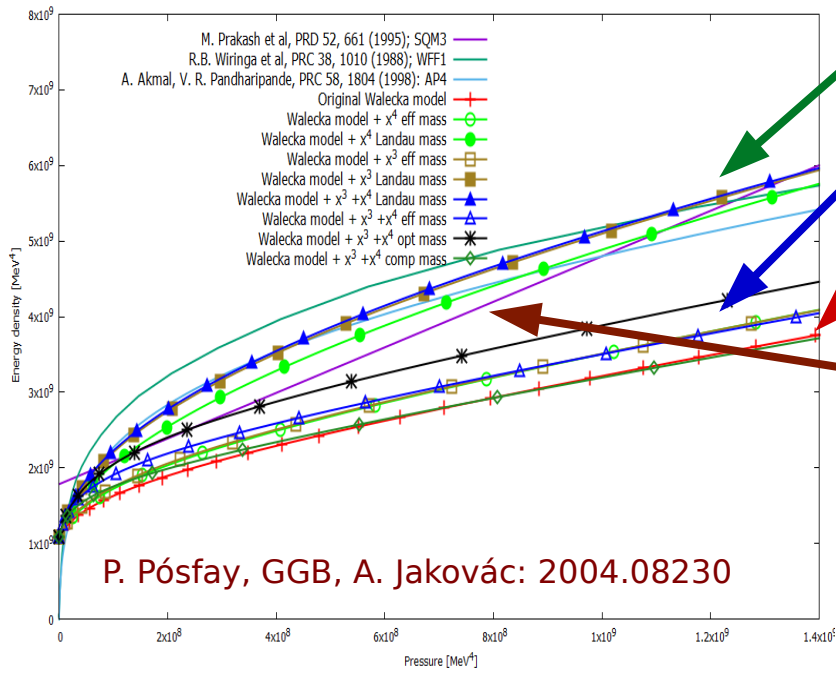


M-R diagram with these nuclear matter EoS

Cases with extra x^3 and/or x^4 terms provide similar band structures

→ Landau mass fits provide lower M_{max} closer to the observations

The EoS & M-R of different model fits

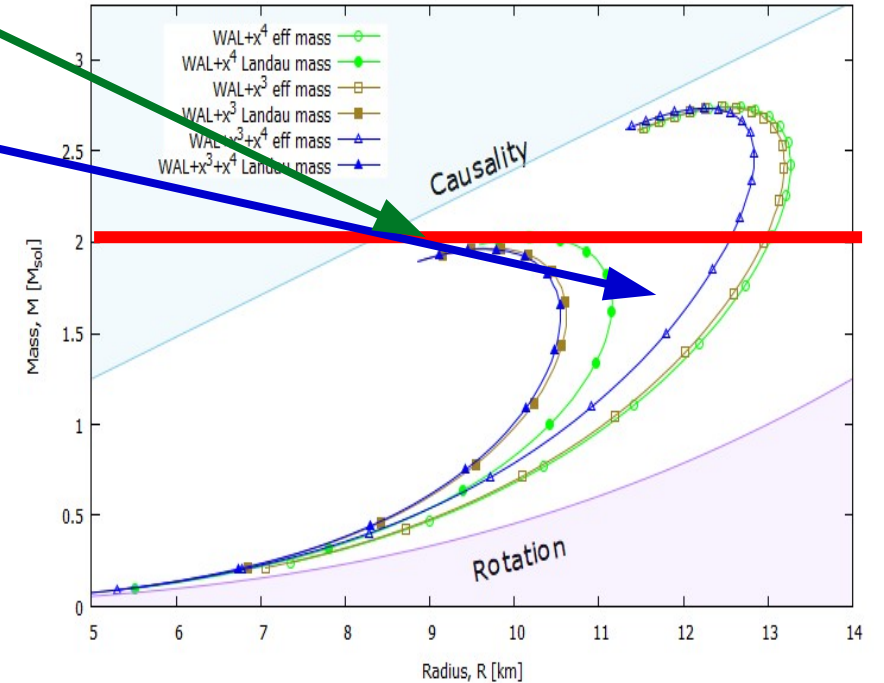


Landau mass fit $m_{\text{Eff}} = 0.83 m_N$

Effective mass fit $m_{\text{Eff}} = 0.6 m_N$

Original Walecka model

Realistic nuclear EoS: WFF1, AP4 (SQM) support the Landau mass

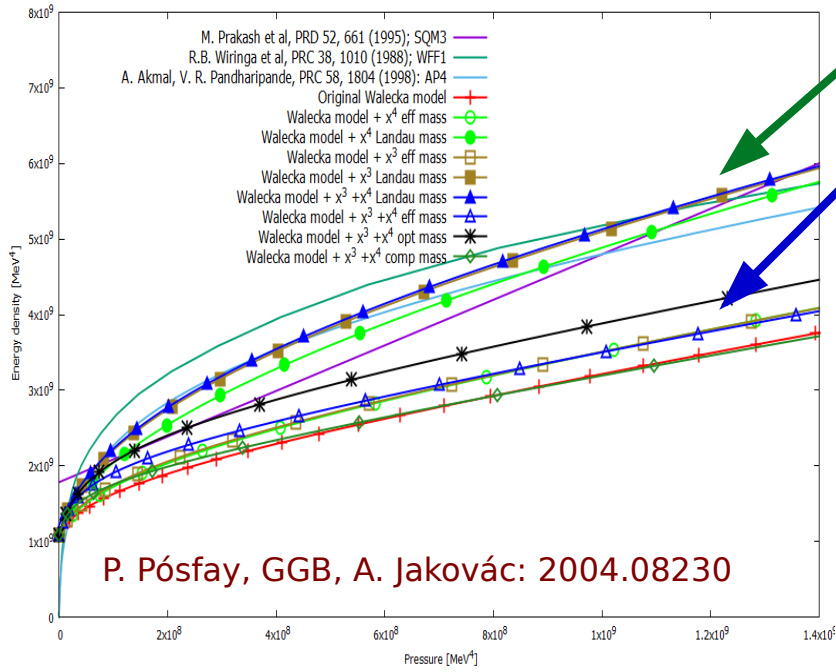


M-R diagram with these nuclear matter EoS

Cases with extra x^3 and/or x^4 terms provide similar band structures

→ Landau mass fits provide lower M_{max} closer to the observations

The EoS & M-R of different model fits



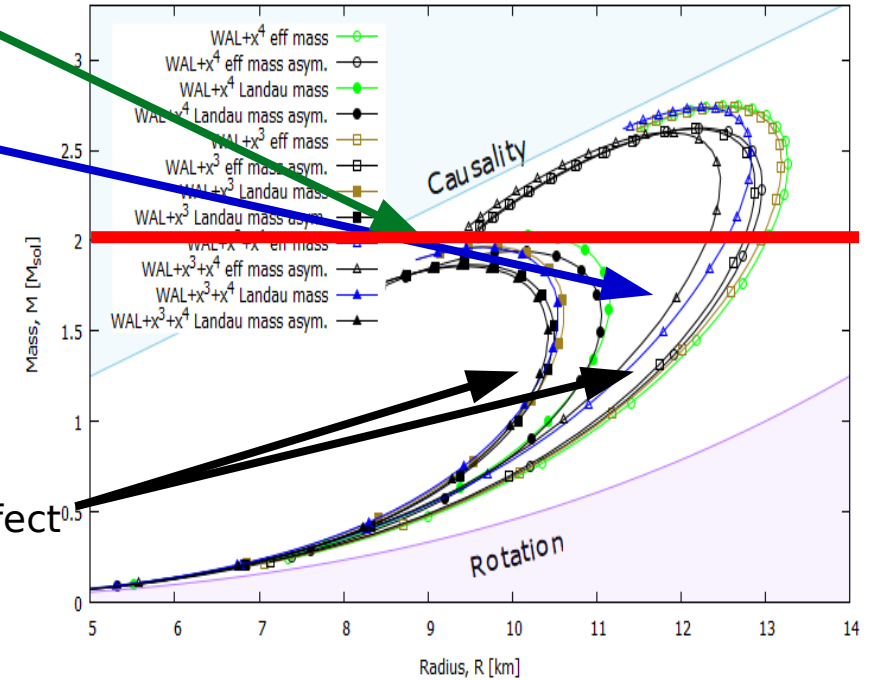
Landau mass fit $m_{\text{Eff}} = 0.83 m_N$

Effective mass fit $m_{\text{Eff}} = 0.6 m_N$

Original Walecka model

Realistic nuclear EoS: WFF1, AP4 (SQM) support the Landau mass

Assymetry (electrons) is weak effect



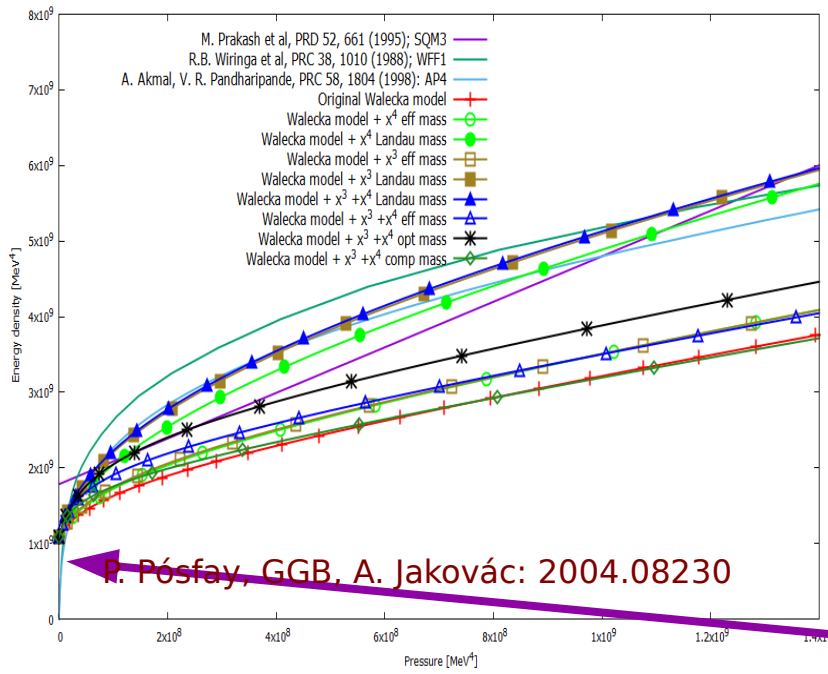
M-R diagram with these nuclear matter EoS

Cases with extra x^3 and/or x^4 terms provide similar band structures

→ Landau mass fits provide lower M_{max} closer to the observations

→ Nuclear ASYMMETRY result in 10-20% lower M_{max}

The EoS & M-R of different model fits



Landau mass fit $m_{\text{Eff}} = 0.83 m_N$

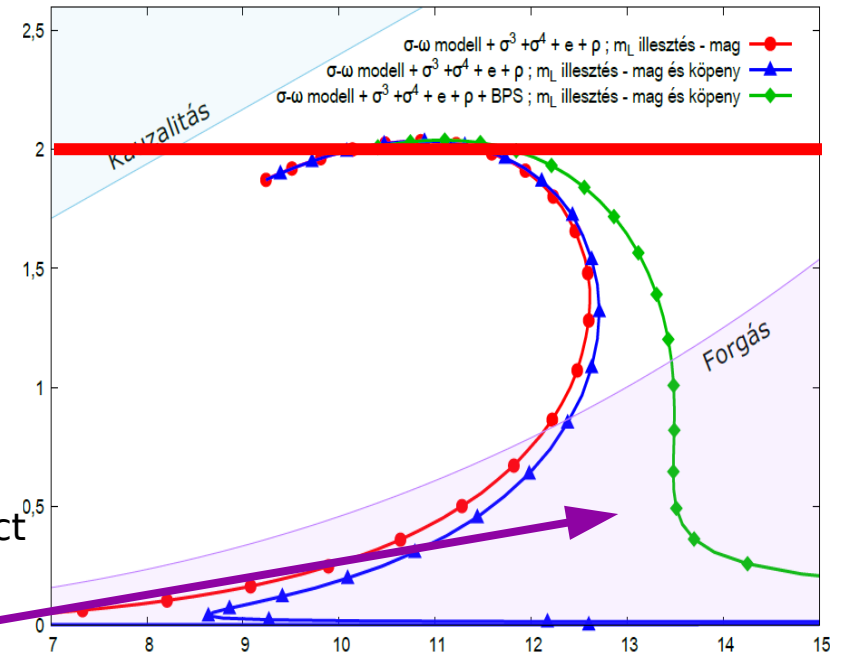
Effective mass fit $m_{\text{Eff}} = 0.6 m_N$

Original Walecka model

Realistic nuclear EoS: WFF1, AP4 (SQM) support the Landau mass

Assymetry (electrons) is weak effect

Crust (BPS) make more realistic



M-R diagram with these nuclear matter EoS

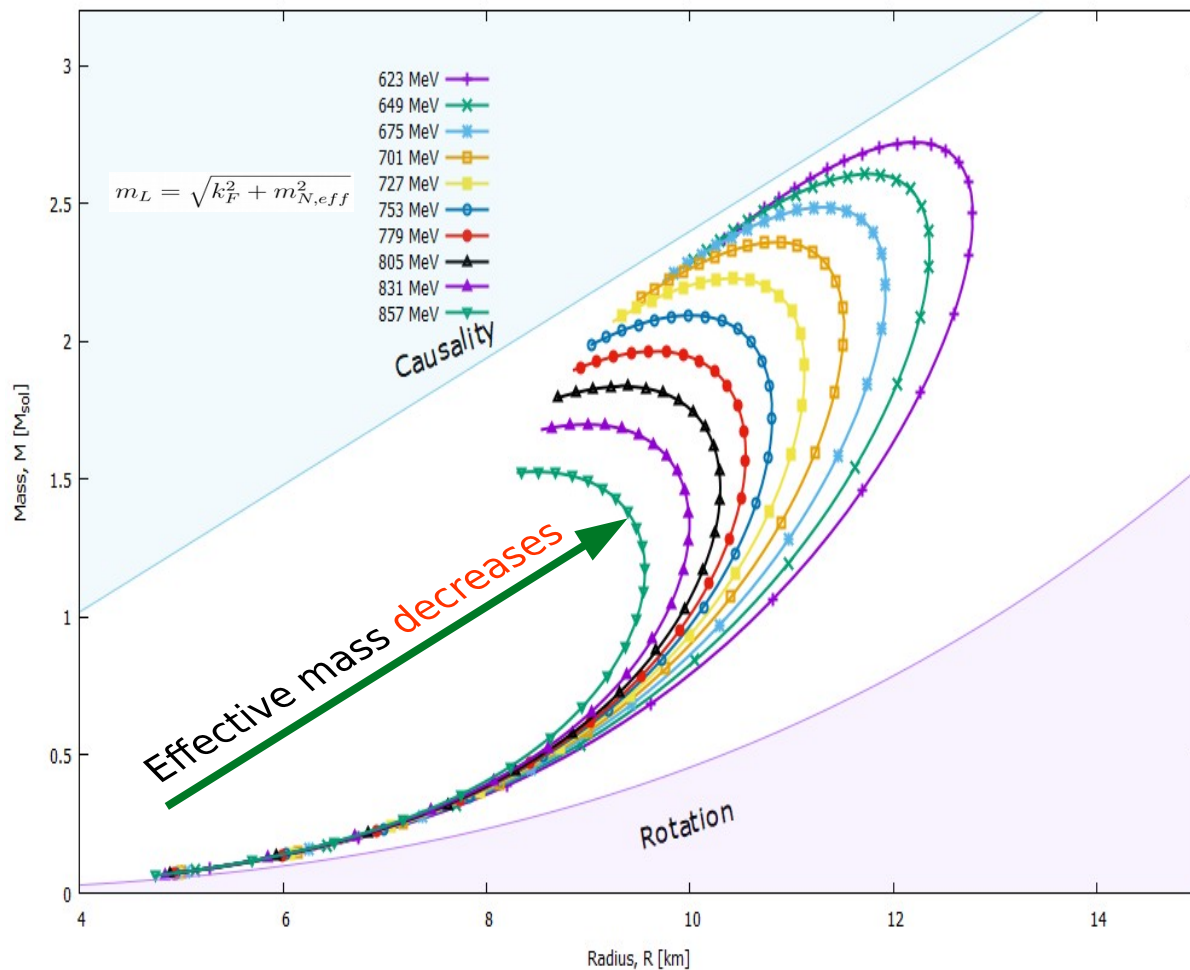
Cases with extra x^3 and/or x^4 terms provide similar band structures

→ Landau mass fits provide lower M_{max} closer to the observations

→ Nuclear ASYMMETRY result in 10-20% lower M_{max}

→ Adding CORE with BPS has no effect on M_{max} , only on R (~km)

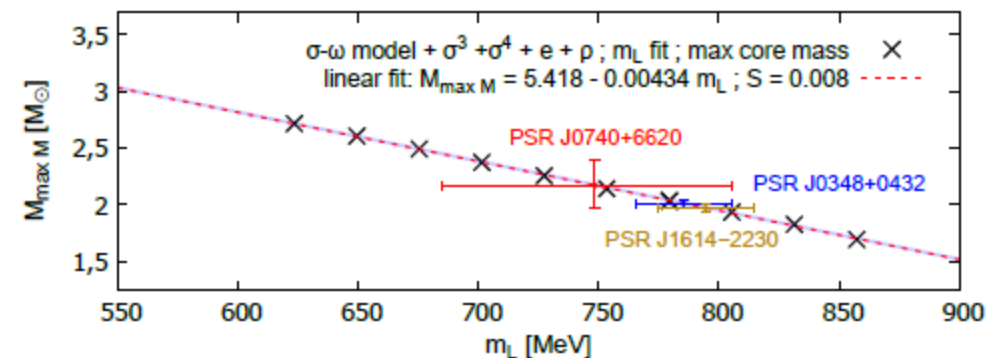
The M-R diagrams: EoS & Landau mass fit



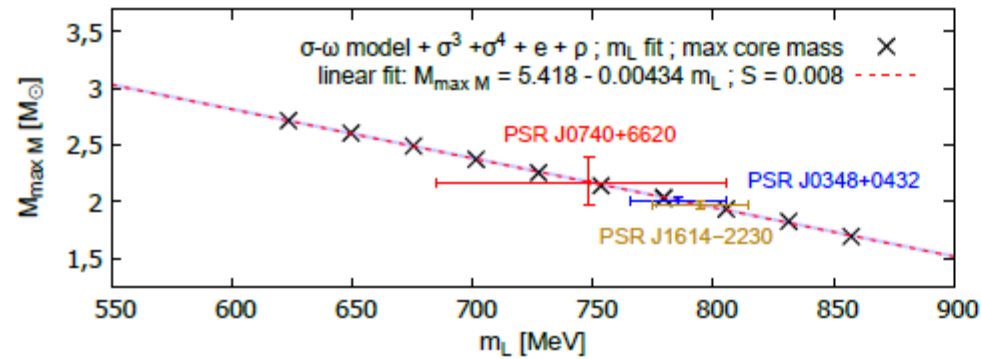
Evolution/scaling in M_{\max} appears

- The M_{\max} is increasing as the Landau (effective) mass is decreasing

→ Scaling by nuclear parameters



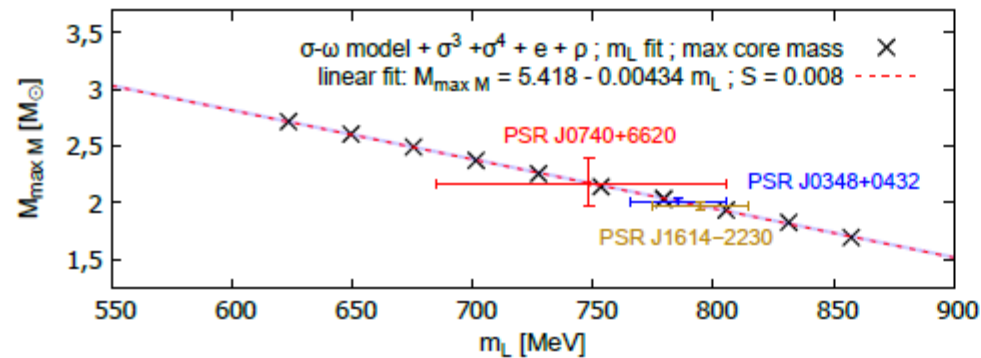
Scaling: maximum star mass vs. nuclear parameters



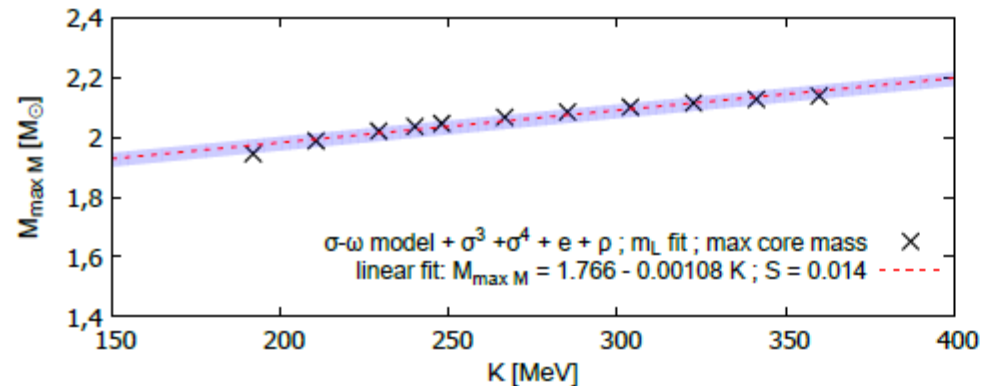
Maximal mass
with Landau mass

$$M_{\max M}(m_L)[M_{\odot}] = 5.418 - 0.00434 m_L[\text{MeV}]$$

Scaling: maximum star mass vs. nuclear parameters



a)



Maximal mass
with Landau mass

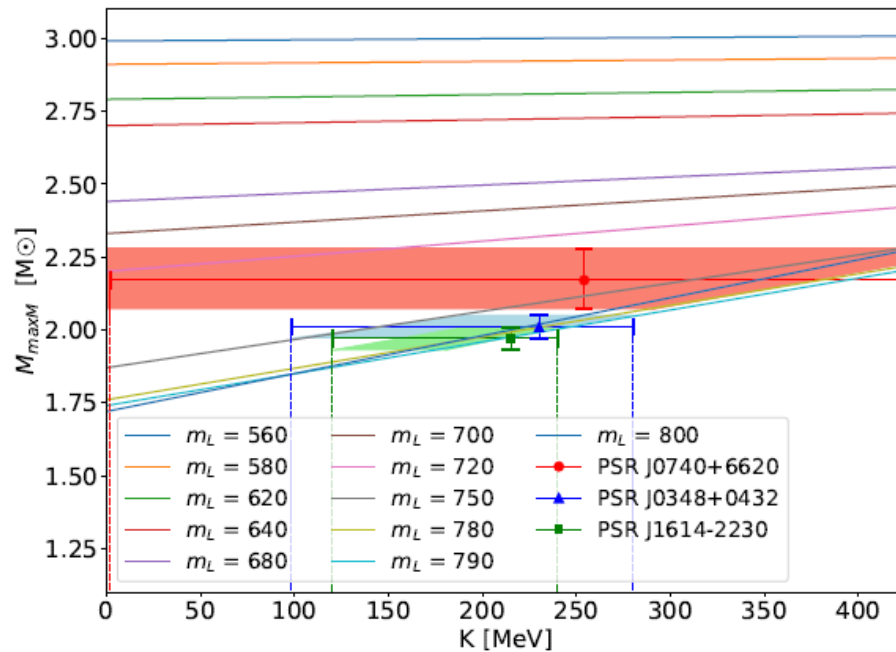
$$M_{maxM}(m_L)[M_\odot] = 5.418 - 0.00434 m_L [\text{MeV}]$$

with (in)compressibility

$$M_{maxM}(K)[M_\odot] = 1.766 + 0.00110 K [\text{MeV}]$$

$$\Delta M_{max}(\delta m_L) \stackrel{10\times}{>} \Delta M_{max}(\delta K)$$

Scaling: maximum star mass vs. nuclear parameters



Maximal mass
with Landau mass

$$M_{maxM}(m_L)[M_\odot] = 5.418 - 0.00434 m_L [\text{MeV}]$$

with (in)compressibility

$$M_{maxM}(K)[M_\odot] = 1.766 + 0.00110K [\text{MeV}]$$

Combine these to a 2-parameter fit:

$$M_{maxM}(m_L, K)[M_\odot] = 6.29 - 0.00574 m_L [\text{MeV}] - 0.00379 K [\text{MeV}] + 0.00000524 m_L \cdot K [\text{MeV}^2],$$

Scaling: maximum star mass vs. nuclear parameters

Maximal mass & its radius
with Landau mass

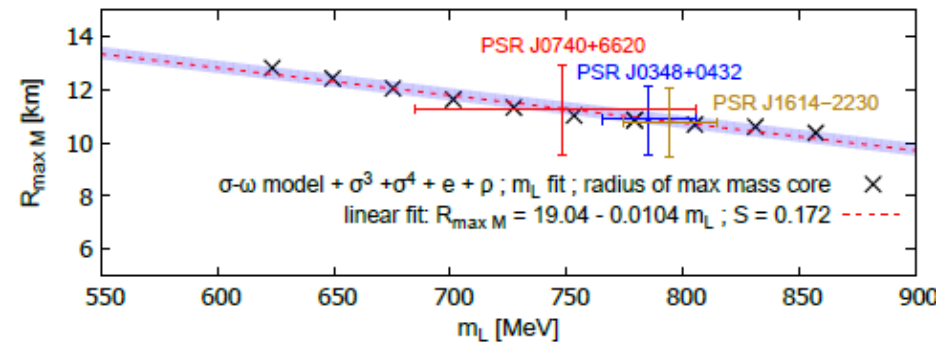
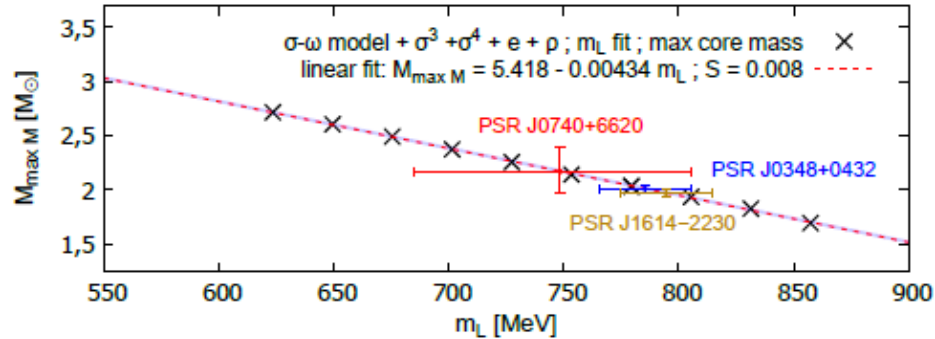
$$M_{maxM}(m_L)[M_\odot] = 5.418 - 0.00434 m_L [\text{MeV}]$$

$$R_{maxM}(m_L)[\text{km}] = 19.04 - 0.01040 m_L [\text{MeV}]$$

with (in)compressibility

$$M_{maxM}(K)[M_\odot] = 1.766 + 0.00110K [\text{MeV}]$$

$$R_{maxM}(K)[\text{km}] = 8.878 + 0.00767K [\text{MeV}]$$



Scaling: maximum star mass vs. nuclear parameters

Maximal mass & its radius
with Landau mass

$$M_{maxM}(m_L)[M_\odot] = 5.418 - 0.00434 m_L [\text{MeV}]$$

$$R_{maxM}(m_L)[\text{km}] = 19.04 - 0.01040 m_L [\text{MeV}]$$

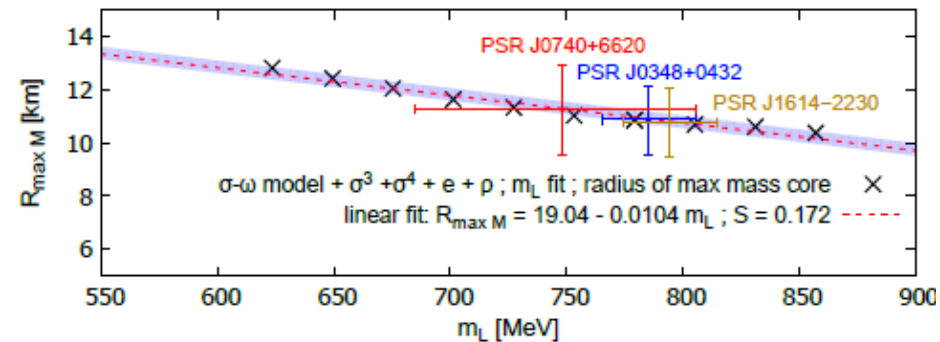
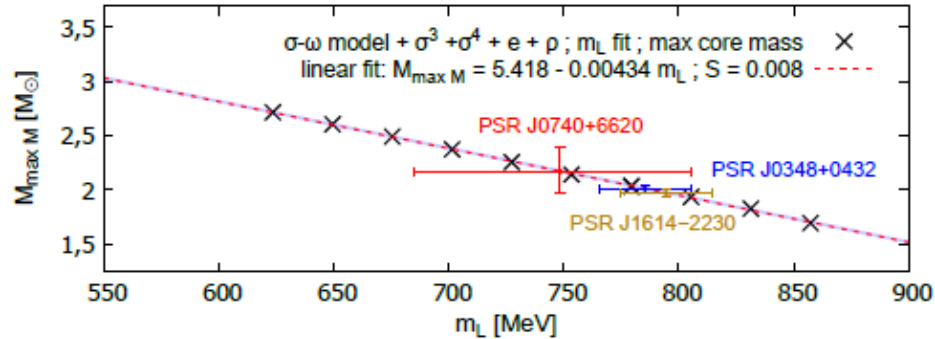
with (in)compressibility

$$M_{maxM}(K)[M_\odot] = 1.766 + 0.00110K [\text{MeV}]$$

$$R_{maxM}(K)[\text{km}] = 8.878 + 0.00767K [\text{MeV}]$$

Calculation for maximal mass star

Measured: $M_{maxM} \rightarrow (m_L \ \& \ K) \rightarrow R_{maxM}$



Scaling: maximum star mass vs. nuclear parameters

Maximal mass & its radius
with Landau mass

$$M_{maxM}(m_L)[M_\odot] = 5.418 - 0.00434 m_L [\text{MeV}]$$

$$R_{maxM}(m_L)[\text{km}] = 19.04 - 0.01040 m_L [\text{MeV}]$$

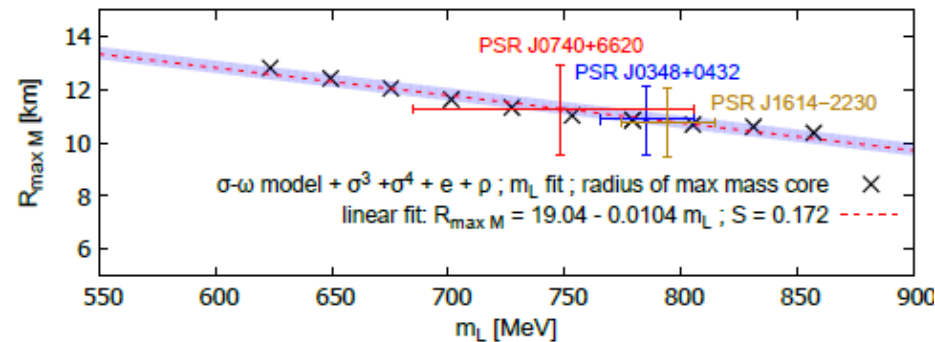
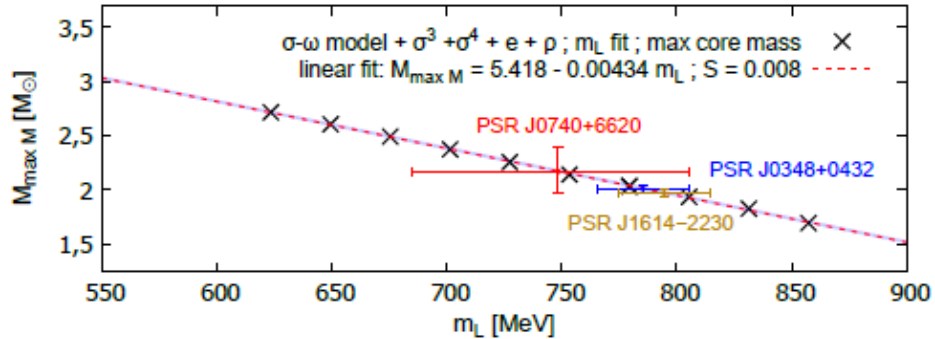
with (in)compressibility

$$M_{maxM}(K)[M_\odot] = 1.766 + 0.00110K [\text{MeV}]$$

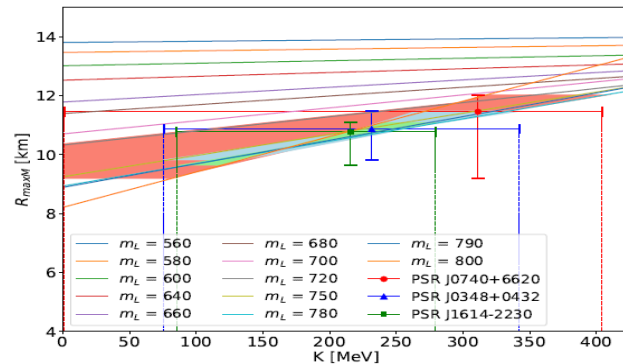
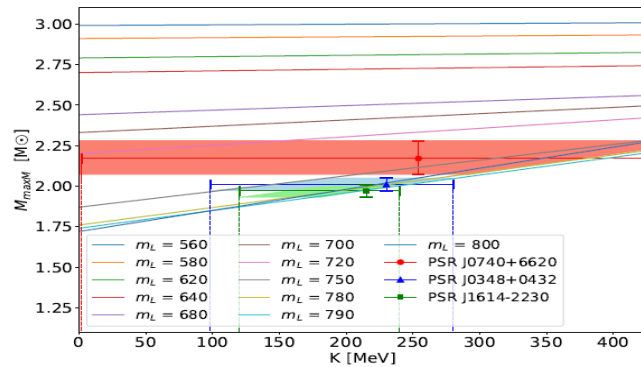
$$R_{maxM}(K)[\text{km}] = 8.878 + 0.00767K [\text{MeV}]$$

Calculation for maximal mass star

Pulsar	$R_{maxM}[\text{km}]$	$M_{maxM}[M_\odot]$	$m_L[\text{MeV}]$	$K[\text{MeV}]$
PSR J0740+6620	$11.25^{+1.06}_{-1.04}$	$2.17^{+0.11}_{-0.10} *$	$748.39^{+63.3}_{-57.2}$	$351.8^{+115}_{-84.5}$
PSR J0348+0432	$10.87^{+0.82}_{-0.80}$	$2.01^{+0.04}_{-0.04} *$	$785.25^{+20.0}_{-20.3}$	$206.4^{+42.7}_{-20.5}$
PSR J1614-2230	$10.77^{+0.82}_{-0.80}$	$1.97^{+0.04}_{-0.04} *$	$794.47^{+20.1}_{-20.4}$	$170.0^{+15.5}_{-20.9}$



Scaling: maximum star mass vs. nuclear parameters



Maximal mass & its radius
with Landau mass

$$M_{maxM}(m_L)[M_\odot] = 5.418 - 0.00434 m_L [\text{MeV}]$$

$$R_{maxM}(m_L)[\text{km}] = 19.04 - 0.01040 m_L [\text{MeV}]$$

with (in)compressibility

$$M_{maxM}(K)[M_\odot] = 1.766 + 0.00110K [\text{MeV}]$$

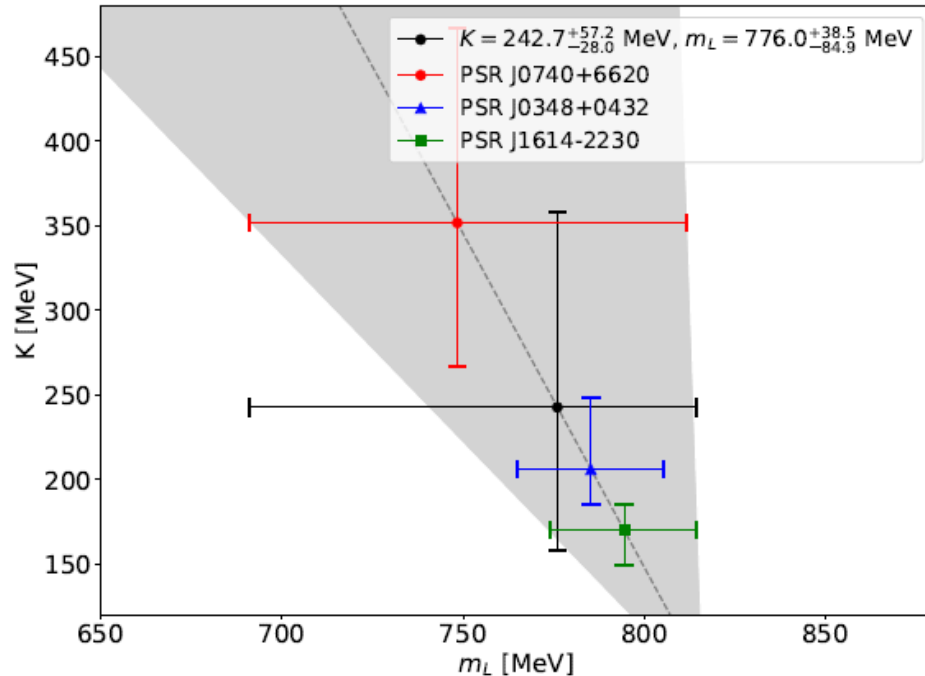
$$R_{maxM}(K)[\text{km}] = 8.878 + 0.00767K [\text{MeV}]$$

Combine these to a 2-parameter fit:

$$M_{maxM}(m_L, K)[M_\odot] = 6.29 - 0.00574 m_L [\text{MeV}] - 0.00379 K [\text{MeV}] + 0.00000524 m_L \cdot K [\text{MeV}^2],$$

$$R_{maxM}(m_L, K)[\text{km}] = 27.51 - 0.0239 m_L [\text{MeV}] - 0.0241 K [\text{MeV}] + 0.0000411 m_L \cdot K [\text{MeV}^2]$$

From data: Maximum star mass vs. nuclear parameters



Maximal mass & its radius
with Landau mass

$$M_{maxM}(m_L)[M_\odot] = 5.418 - 0.00434 m_L [\text{MeV}]$$

$$R_{maxM}(m_L)[\text{km}] = 19.04 - 0.01040 m_L [\text{MeV}]$$

with (in)compressibility

$$M_{maxM}(K)[M_\odot] = 1.766 + 0.00110K [\text{MeV}]$$

$$R_{maxM}(K)[\text{km}] = 8.878 + 0.00767K [\text{MeV}]$$

Combine these to a 2-parameter fit:

$$M_{maxM}(m_L, K)[M_\odot] = 6.29 - 0.00574 m_L [\text{MeV}] - 0.00379 K [\text{MeV}] + 0.00000524 m_L \cdot K [\text{MeV}^2],$$

$$R_{maxM}(m_L, K)[\text{km}] = 27.51 - 0.0239 m_L [\text{MeV}] - 0.0241 K [\text{MeV}] + 0.0000411 m_L \cdot K [\text{MeV}^2]$$

From data: Maximum star mass vs. nuclear parameters

Maximal mass & its radius
with Landau mass

$$M_{maxM}(m_L)[M_\odot] = 5.418 - 0.00434 m_L [\text{MeV}]$$

$$R_{maxM}(m_L)[\text{km}] = 19.04 - 0.01040 m_L [\text{MeV}]$$

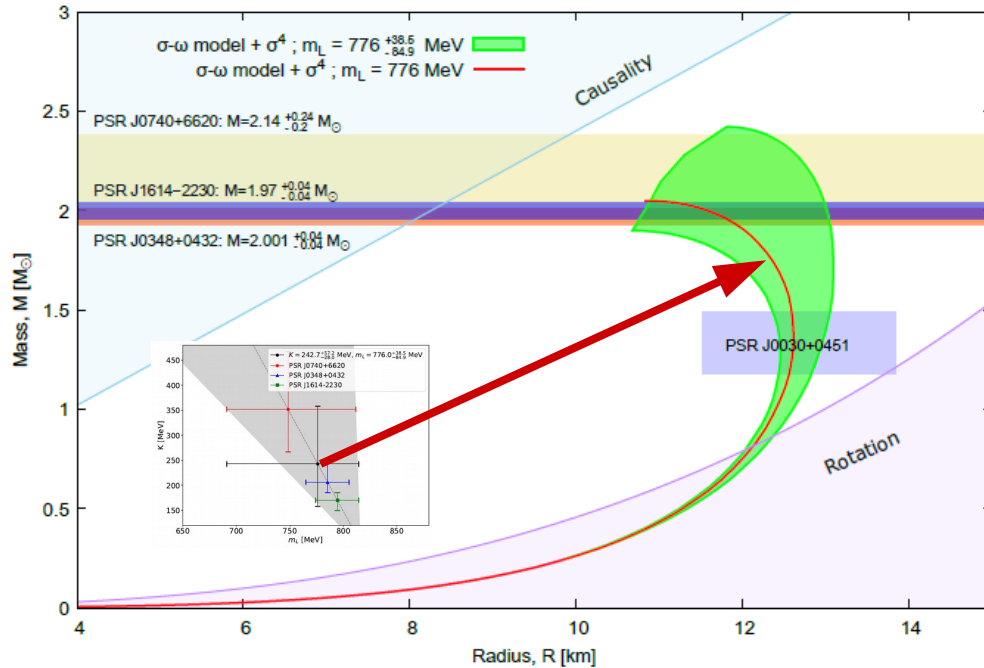
with (in)compressibility

$$M_{maxM}(K)[M_\odot] = 1.766 + 0.00110K [\text{MeV}]$$

$$R_{maxM}(K)[\text{km}] = 8.878 + 0.00767K [\text{MeV}]$$

Results from data using fit formulae:

$$m_L = 776.0^{+38.5}_{-84.9} \text{ MeV and } K = 242.7^{+57.2}_{-28.0} \text{ MeV}$$



Explore the uncertainties...

... using the brute force

D. Alvarez-Castillo, A. Ayrian, GGB, P. Pósfay: Phys. Part & Nucl. 51 (2020) 725, + H. Grigorian EPJ ST 229 (2020) 3615

Love Number & tidal deformability

Extension of a standard TOV solver (i.e. numerically an integration of coupled ODEs):

Ansatz for the metric including a l=2 perturbation

$$ds^2 = -e^{2\Phi(r)} [1 + H(r)Y_{20}(\theta, \varphi)] dt^2 + e^{2\Lambda(r)} [1 - H(r)Y_{20}(\theta, \varphi)] dr^2 + r^2 [1 - K(r)Y_{20}(\theta, \varphi)] (d\theta^2 + \sin^2 \theta d\varphi^2)$$

Following Hinderer et al. 2010

Integrate standard TOV system:

And additional eqs. for perturbations:

$$e^{2\Lambda} = \left(1 - \frac{2m_r}{r}\right)^{-1},$$

$$\frac{d\Phi}{dr} = -\frac{1}{\epsilon + p} \frac{dp}{dr},$$

$$\frac{dp}{dr} = -(\epsilon + p) \frac{m_r + 4\pi r^3 p}{r(r - 2m_r)},$$

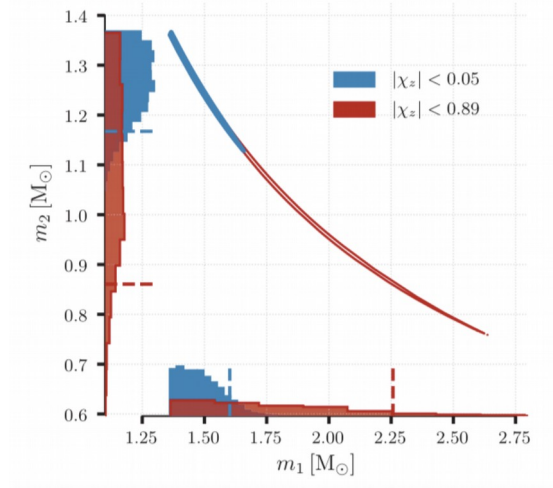
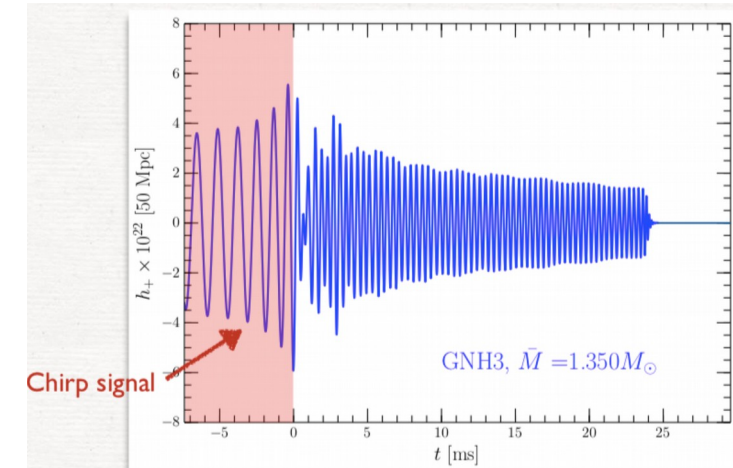
$$\frac{dm_r}{dr} = 4\pi r^2 \epsilon.$$

EoS to be provided $\epsilon(p)$

$$\frac{dH}{dr} = \beta \tag{11}$$

$$\frac{d\beta}{dr} = 2 \left(1 - 2\frac{m_r}{r}\right)^{-1} H \left\{ -2\pi [5\epsilon + 9p + f(\epsilon + p)] + \frac{3}{r^2} + 2 \left(1 - 2\frac{m_r}{r}\right)^{-1} \left(\frac{m_r}{r^2} + 4\pi r p\right)^2 \right\} + \frac{2\beta}{r} \left(1 - 2\frac{m_r}{r}\right)^{-1} \left\{ -1 + \frac{m_r}{r} + 2\pi r^2 (\epsilon - p) \right\}.$$

(K(r) given by H(r))



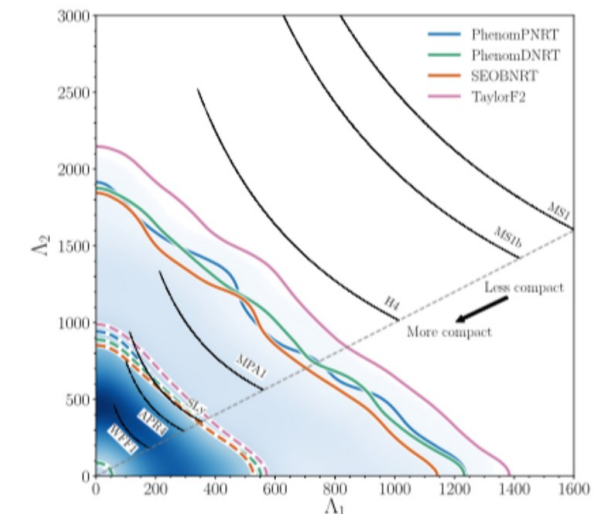
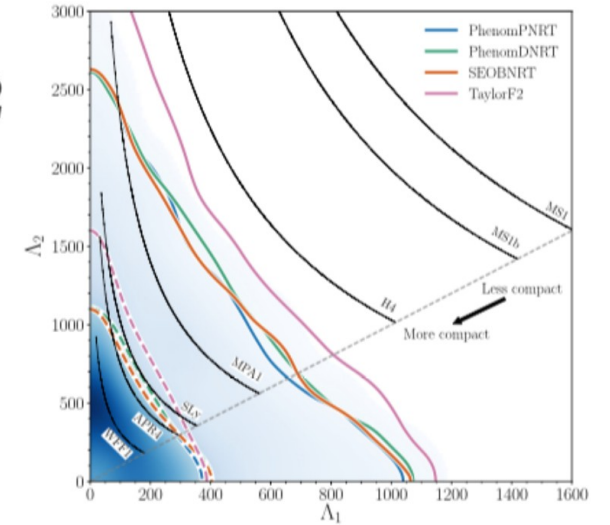
Love Number & tidal deformability

$$y = \frac{R\beta(R)}{H(R)}$$

$$\Lambda = \frac{2}{3} \frac{R^5}{M^5} k_2$$

$$k_2 = \frac{8C^5}{5} (1 - 2C)^2 [2 + 2C(y - 1) - y] \times \left\{ \begin{aligned} &2C[6 - 3y + 3C(5y - 8)] \\ &+ 4C^3[13 - 11y + C(3y - 2) + 2C^2(1 + y)] \\ &+ 3(1 - 2C)^2 [2 - y + 2C(y - 1)] \ln(1 - 2C) \end{aligned} \right\}^{-1}$$

where $C = M/R$ is the compactness of the star.



Brute force: Bayesian analysis

Data: $\vec{\pi}_q = \{m_{L(i)}, K_{0(j)}, S_{0(k)}\}$

Likelihood for given independent constraints:

$$P(E | \vec{\pi}_q) = \prod_w P(E_w | \vec{\pi}_q)$$

Posterior:

$$P(\vec{\pi}_q | E) = \frac{P(E | \vec{\pi}_q) P(\vec{\pi}_q)}{\sum_{p=0}^{N-1} P(E | \vec{\pi}_p) P(\vec{\pi}_p)}$$

Marginalization (1-parameter):

$$P(m_{L(i)} | E) = \sum_{j,k} P(m_{L(i)}, K_{0(j)}, S_{0(k)} | E)$$

D. Alvarez-Castillo, A. Ayrian, GGB, P. Pósfay: Phys. Part & Nucl. 51, 725 (2020)

Brute force: Bayesian analysis

Data: $\vec{\pi}_q = \{m_{L(i)}, K_{0(j)}, S_{0(k)}\}$

Likelihood for given independent constraints:

$$P(E | \vec{\pi}_q) = \prod_w P(E_w | \vec{\pi}_q)$$

Posterior:

$$P(\vec{\pi}_q | E) = \frac{P(E | \vec{\pi}_q) P(\vec{\pi}_q)}{\sum_{p=0}^{N-1} P(E | \vec{\pi}_p) P(\vec{\pi}_p)}$$

Marginalization (1-parameter):

$$P(m_{L(i)} | E) = \sum_{j,k} P(m_{L(i)}, K_{0(j)}, S_{0(k)} | E)$$

Likelihood for GW170817:

$$P(E_{GW} | \pi_q) = \int_l \beta(\Lambda_1(n_c), \Lambda_2(n_c)) dn_c$$

Likelihood for maximal mass

$$P(E_M | \pi_q) = \Phi(M_q, \mu_C, \sigma_C) \times \Phi(M_q, \mu_A, \sigma_A) \times \mathcal{N}(M_q, \mu_U, \sigma_U)$$

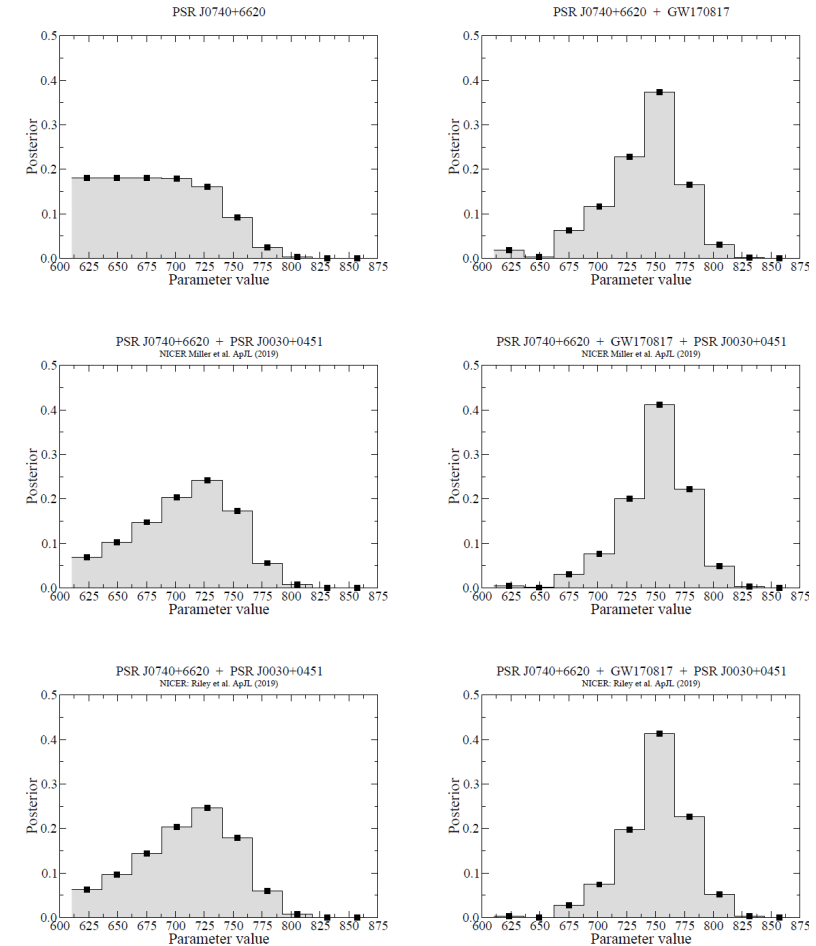
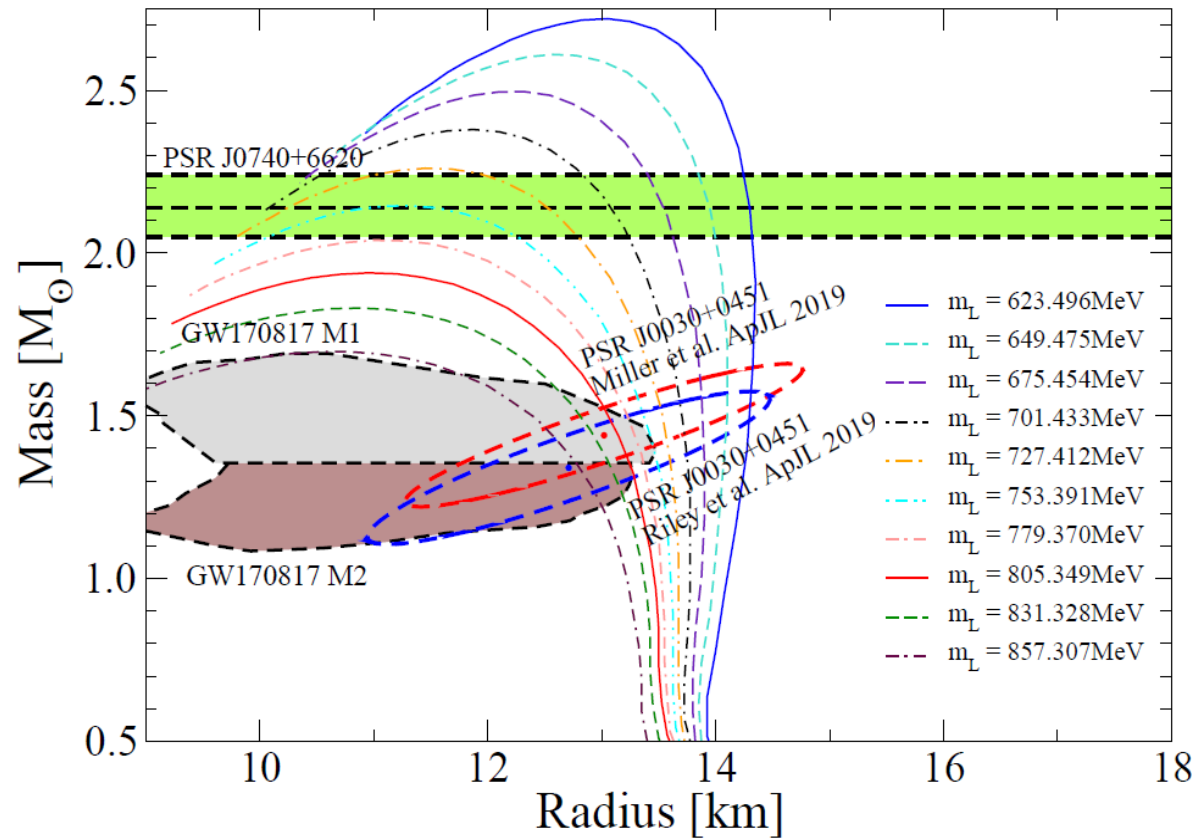
Likelihood for mass & radius

$$P(E_{MR} | \pi_q) = 0.5 \int_l \mathcal{N}(\mu_M^{(1)}, \sigma_M^{(1)}, \mu_R^{(1)}, \sigma_R^{(1)}, \alpha^{(1)}) dn_c \\ + 0.5 \int_l \mathcal{N}(\mu_M^{(2)}, \sigma_M^{(2)}, \mu_R^{(2)}, \sigma_R^{(2)}, \alpha^{(2)}) dn_c,$$

D. Alvarez-Castillo, A. Ayrian, GGB, P. Pósfay: Phys. Part & Nucl. 51, 725 (2020)

Brute force: Bayesian analysis

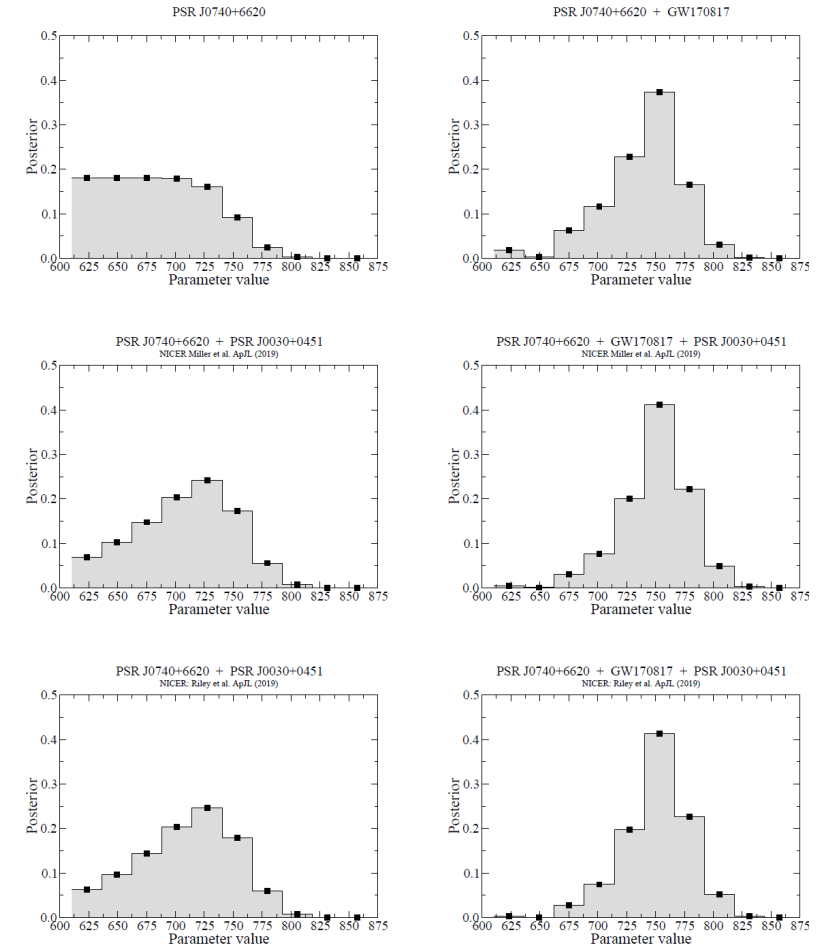
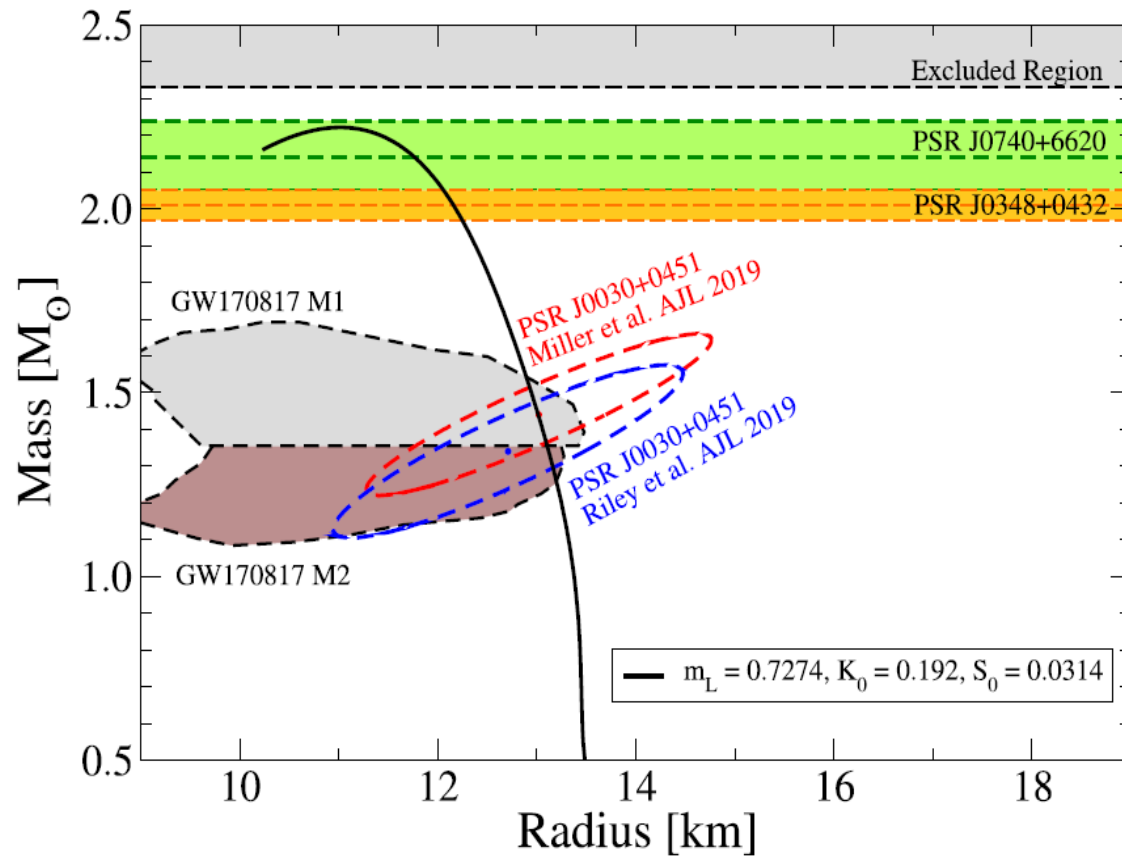
Data with m_L only



D. Alvarez-Castillo, A. Ayrian, GGB, P. Pósfay: Phys. Part & Nucl. 51, 725 (2020)

Brute force: Bayesian analysis

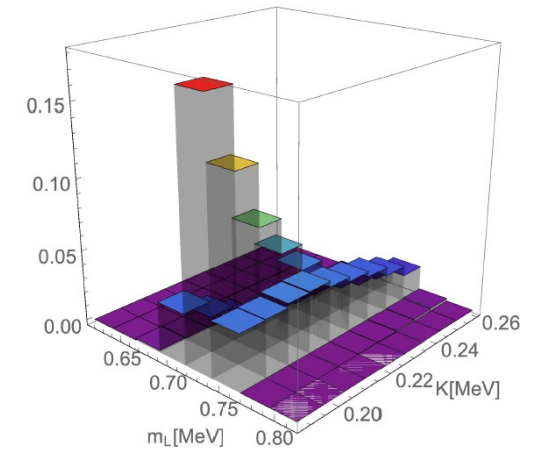
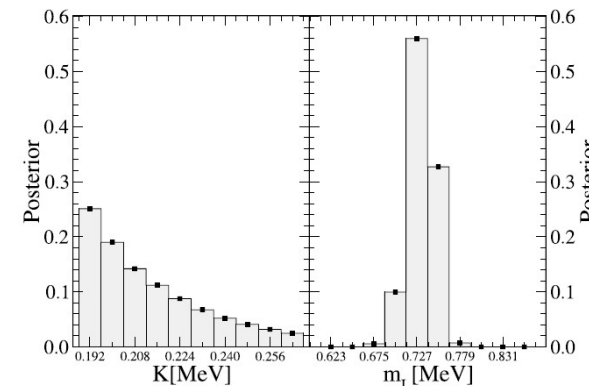
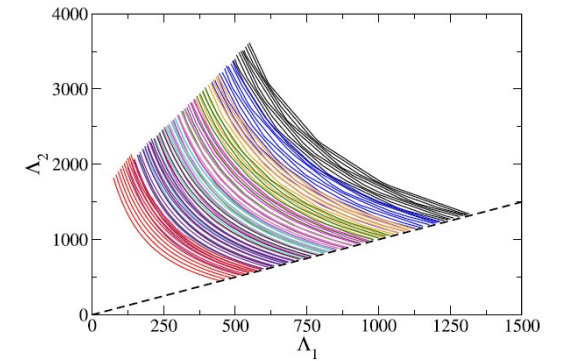
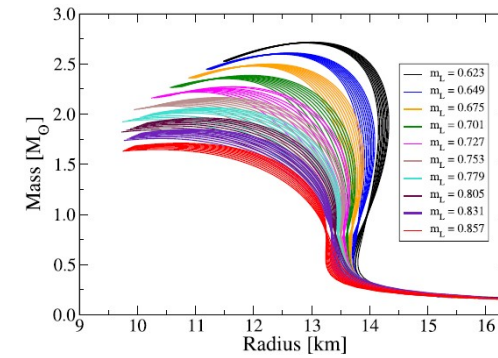
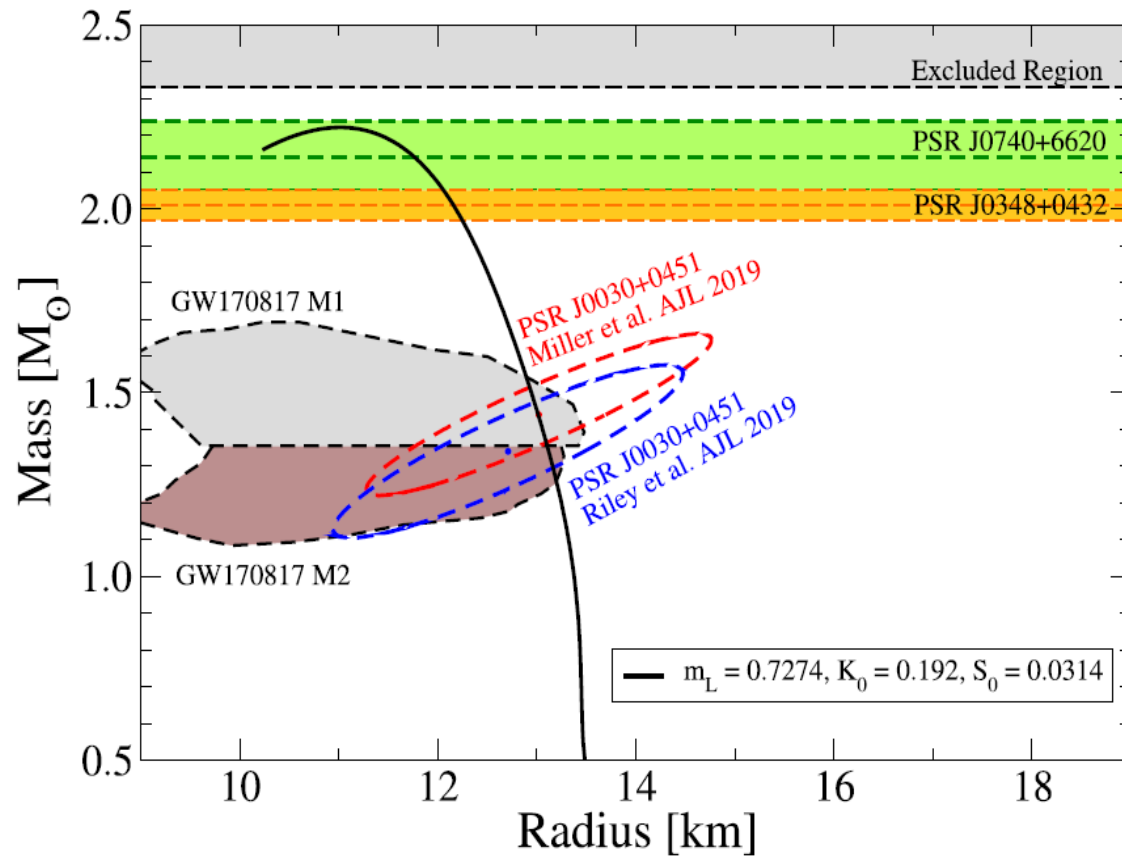
Data with m_L only



D. Alvarez-Castillo, A. Ayrian, GGB, P. Pósfay: Phys. Part & Nucl. 51, 725 (2020)

Brute force: Bayesian analysis

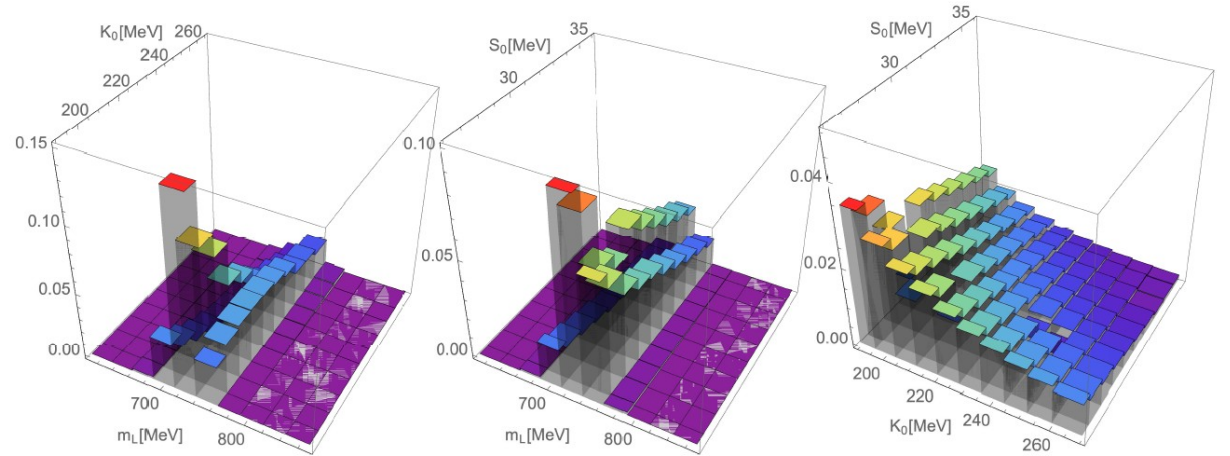
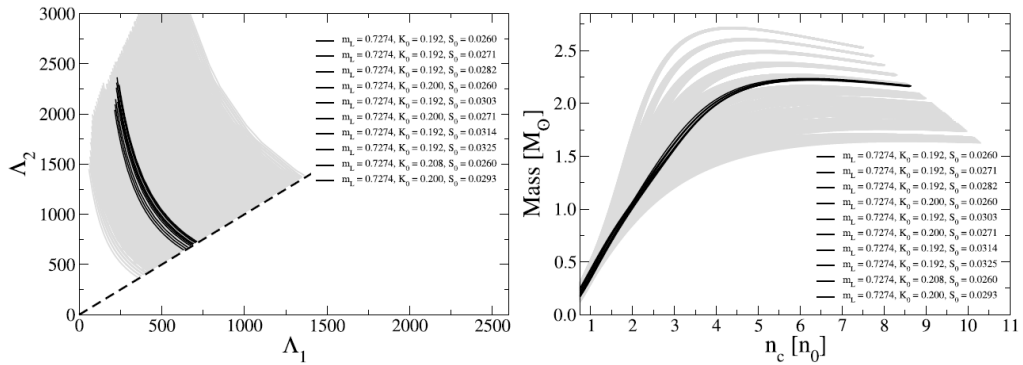
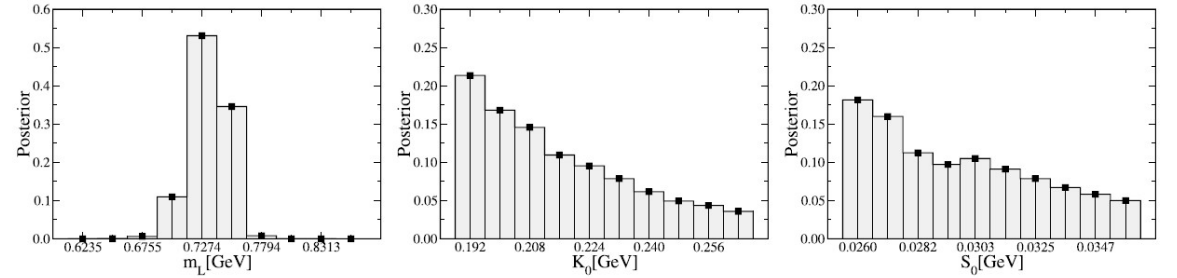
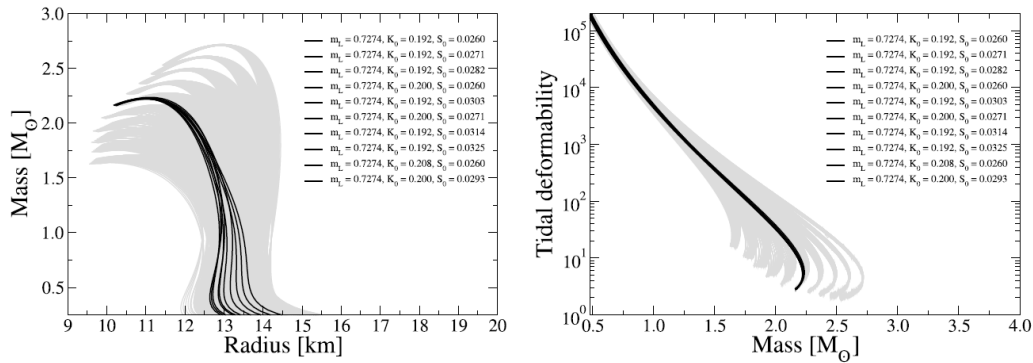
Data with m_L & K



D. Alvarez-Castillo, A. Ayrian, GGB, P. Pósfay: Phys. Part & Nucl. 51, 725 (2020)

Brute force: a Bayesian analysis

Data with m_L & K & S_0



D. Alvarez-Castillo, A. Ayrian, GGB, P. Pósfay, H. Grigorian EPJ ST 229 (2020) 3615

Conclusions: traditions vs brute force

- **Traditional way: mean field model**

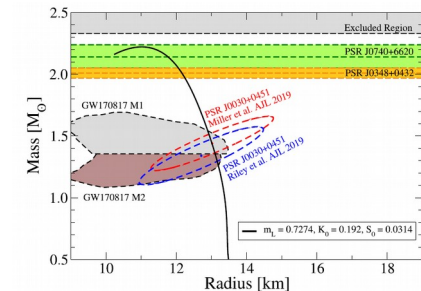
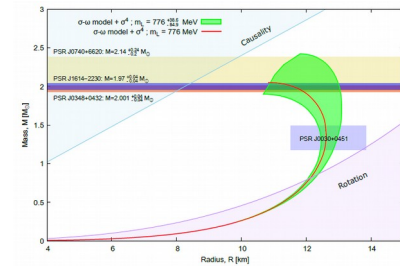
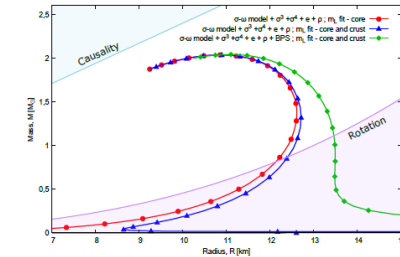
- In CORE approximation: maximal mass provide a unique message:
 - strong linear Landau mass dependence
 - an order of magnitude smaller K-dependence

$$\Delta M_{max}(\delta m_L) \stackrel{10\times}{>} \Delta M_{max}(\delta K) \stackrel{10\times}{>} \Delta M_{max}(\delta a_{sym}).$$

- Soft part of the EoS changes the CRUST, thus vary R
- FRG: parameter 10-25% observables: 5-10%

- **Values & uncertainties - a cross check**

- Traditional model: $m_L = 776.0^{+38.5}_{-84.9}$ MeV and $K = 242.7^{+57.2}_{-28.0}$ MeV
- Bayesian model*: $m_L = 727.4 \pm 15$ MeV and $K = 232 \pm 20$ MeV



BACKUP

BREAKING NEWS



nature

Article | Published: 09 December 2020

Unveiling the strong interaction among hadrons at the LHC

ALICE Collaboration

Nature 588, 232–238(2020) | Cite this article

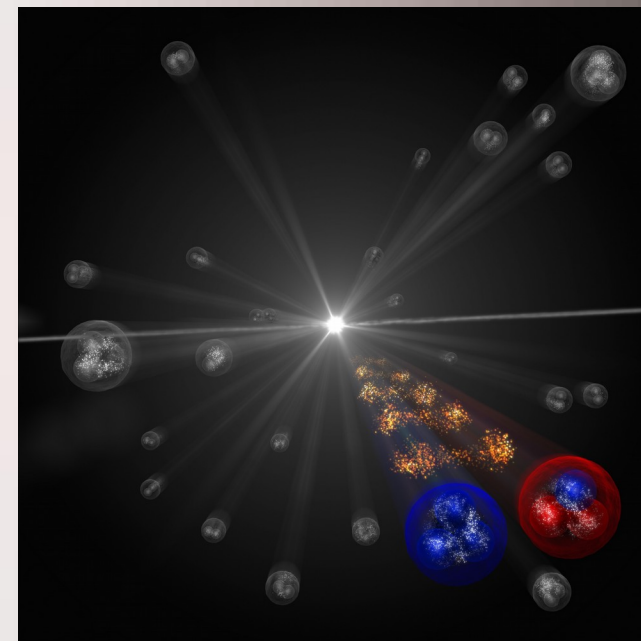
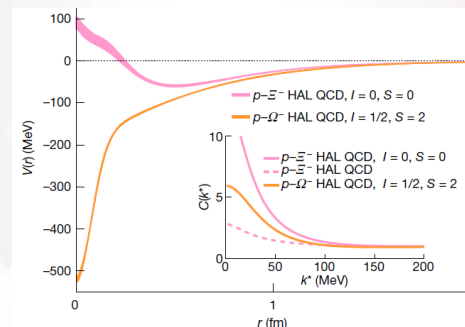
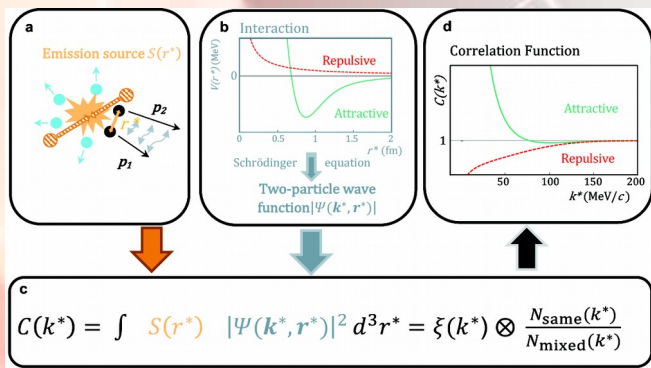


Fig. 4 | Potentials for the $p\text{-}\Xi^-$ and $p\text{-}\Omega^-$ interactions. $p\text{-}\Xi^-$ (pink) and $p\text{-}\Omega^-$ (orange).